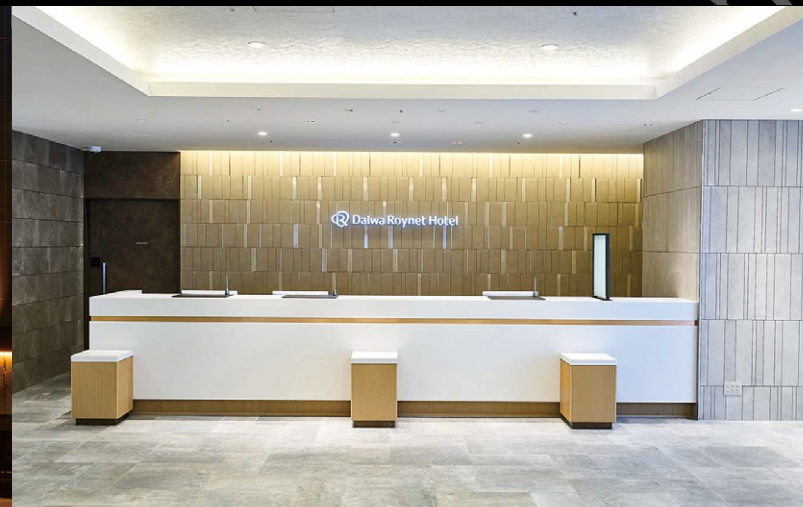


Daiwa Roynet Hotel AKITA-EKIMAE

Enjoy a relaxing hotel stay
in a perfect location close to the station.

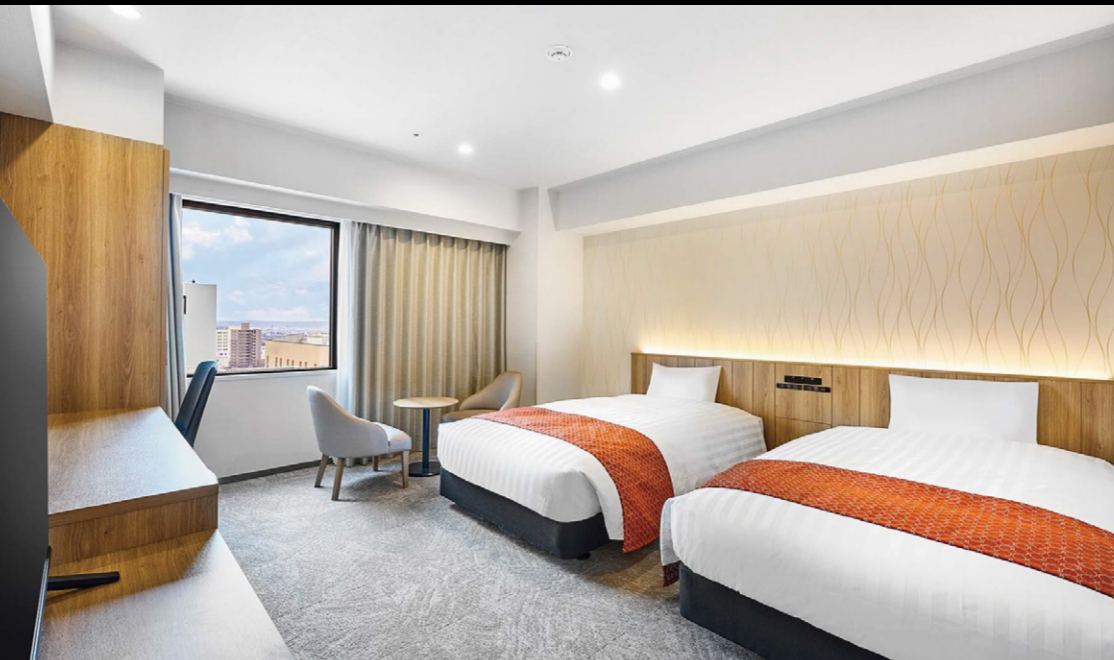
With great access just a 5-minute-walk from
the west exit of JR Akita Station,
we are suitable for various purposes whether your trip is
business, sightseeing or group travel with family or friends.

And as a first for Daiwa Roynet Hotels,
we have large communal baths equipped
with saunas for men and for women
to help you unwind at the end of an active day.

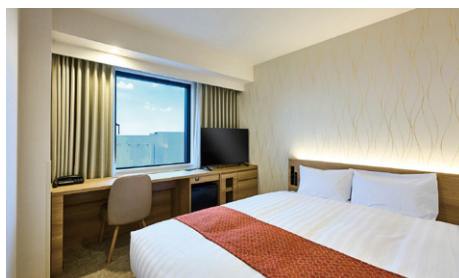


ダイワロイネットホテル 秋田駅前

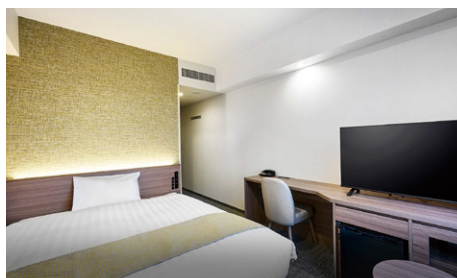




Superior Twin Room (30.6m²)



Standard Double Room (15.9m²)



Moderate Double Room (21.5m²)

Facilities and amenities

Wireless LAN (Wi-Fi standard)

Duvet / Liquid crystal display television set / Energy-saving system / Refrigerator (empty) / Air purifier with humidifier / Safe / Hair dryer / Bidet-style toilet seat / Charger for mobile devices / Electric kettle / Hair shampoo / Hair rinse / Body soap / Face and hand soap / Fabric deodorizer / Shovel / Shoe polisher / Hangers / Bath towel / Face towel / Bath mat / Nightwear / Slippers

* Please pick up tooth brush sets, hair brushes, razors, cotton swabs, body towels and others at the amenity bar on the front desk floor.

Amenities for kids (available at the front desk)



Junior Suite (44.6m²)

All guest rooms except standard double rooms and universal twin rooms have separate bathroom and toilet, which allow you to enjoy a leisurely bath.

Also, all guest rooms have a bathtub, so even guests who do not use the large communal bath can still enjoy a relaxing soak.

Separate toilet and bathroom (example)



We also have superior double rooms (23.3m²), deluxe queen rooms (25.4m²) and many other types of guest rooms (15.9 to 47.8 m²).
(214 rooms in total)

Facilities and services

Copy and fax services (subject to fees)

Parcel delivery service / Microwave / Vending machine / Ice / Laundromat / Auto adjustment machine / AED / Wheelchair

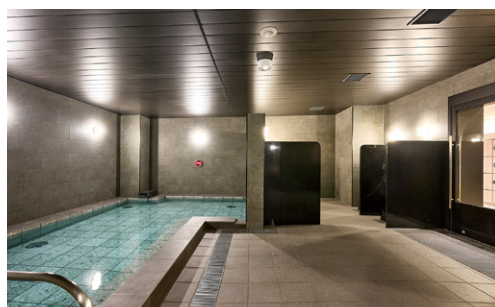
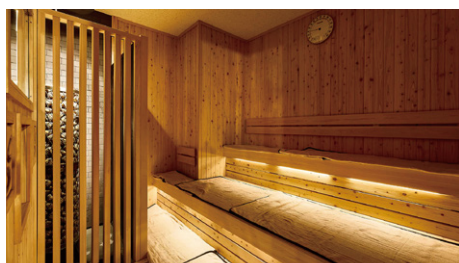
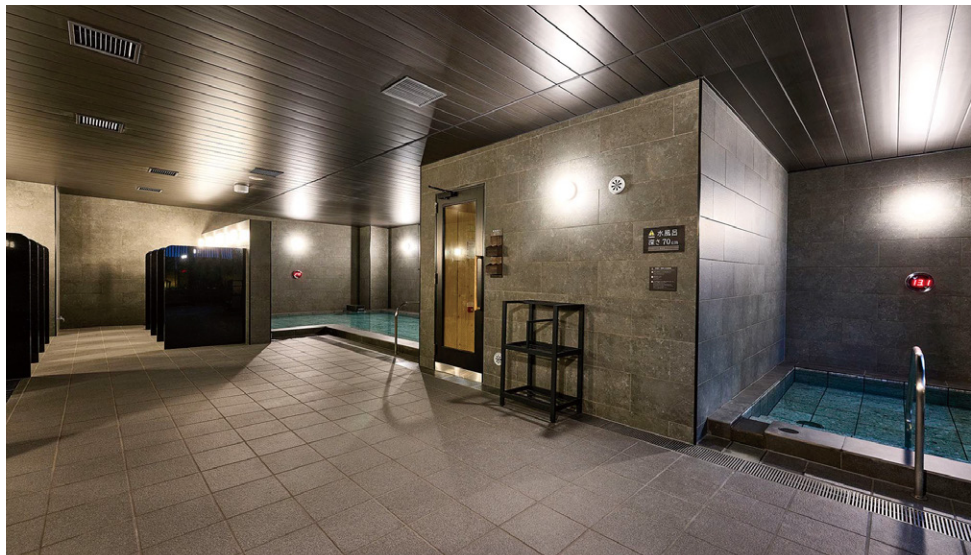
Large communal bath with sauna (3F)

Fully equipped with large baths with sauna for the exclusive use of hotel guests.

We hope these will help provide a healing experience.

There are large men's and women's baths and sauna (with an automatic steam system), a cold-water bath with a chiller (cooling water circulating device) and a space for outdoor air bathing.

Open from 6:00 a.m. to 10:00 a.m. and 3:00 p.m. to 12:00 a.m.



Meeting room (2F : 56.7m²)

Our meeting room can be used for a variety of purposes. It has ample facilities and services such as basic furnishing, Internet connectivity, and rental fixtures. It is suitable for conferences, training, job interviews, or presentations.



Available from 9:00 a.m. to 9:00 p.m.

Capacity

Classroom	Hollow Square
36 people	24 people

Price (including tax): JPY8,000 / hour

Rental fixtures (including tax)

Projector	Free	Whiteboard	Free
Microphone (one unit) and stand	Free	Hanger rack and hangers	Free
Internet connection (Wi-Fi)	Free		

* Contact us for detailed information about each fixture.

* Please contact us for more information on availability and so on.

Cancellation charge

Before 14 days	Before 2 days	Previous day	Same day	No use without notice
20%	50%	80%	100%	100%

Restaurants and stores

Seven-Eleven (1F): Open 24 hours

Italian restaurant Tavernetta Salvatore Akita (1F) Breakfast – 6:30 a.m. to 10:00 a.m.

Lunch: weekday – 11:30 a.m. to 2:30 p.m.; Saturday, Sunday and holidays – 11:30 a.m. to 3:30 p.m.

café time (only Saturday, Sunday and holidays) – 5:00 p.m. to 5:00 p.m. / Dinner – 5:00 p.m. to 10:30 p.m.



Breakfast (1F: Tavernetta Salvatore Akita)

Please enjoy renowned local Akita cuisine including Kiritampo-nabe and Inaniwa udon as well as a buffet of Japanese and Western dishes prepared with fresh ingredients.

* Please note that these dishes could be changed without notice depending on the availability of ingredients.

6:30 a.m. to 10:00 a.m. (please enter by 9:30 a.m.)

Adults (13 years and older): JPY1,870 (including tax)/

Children (from 6 to 12 years old): JPY1,100 (including tax)

Breakfast vouchers are sold at the front desk.

Local area guide (access from the hotel)

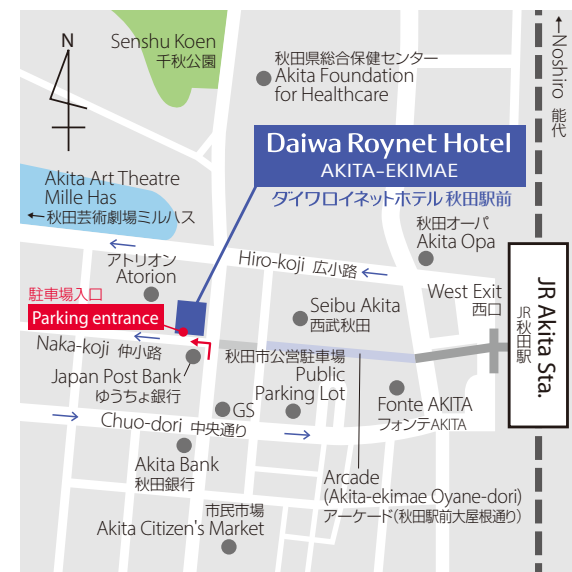
Senshu Koen: About a 4-minute walk

Akita City Folk Performing Arts Heritage Center (Neburinagasi Kan): About a 14-minute walk

Akita City Akarenga (Red Brick) Folk Museum - Tokushi Katsuhira Memorial Hall: About a 14-minute walk

Akita Omoriyama Zoo: About a 21-minute drive

Akita Kanto Festival (August 3 to 6): In Kanto-odori St.



- 1) About a 5-minute walk from West Exit of JR Akita Station
- 2) About 40 minutes to West Exit of JR Akita Station Akita Airport by Limousine bus.
- 3) About 10 minutes from Akita-chuo IC on Akita Expressway

Hotel Parking

Fee: JPY1,000 per car from 2:00 p.m. to 11:00 a.m. the following day (including tax)

* You will be charged if you arrive very early in the morning or if you overstay the stated hours.

Operating hours: 7:00 a.m. to 10:00 p.m.

Capacity: 60 cars (32 high-roof cars can park within this)

Vehicle restrictions: Maximum length – 5,300mm / Maximum width – 2,000mm / Maximum height – 2,000mm / Maximum weight – 2.5t

* Available on arrival. We do not accept prior reservations.

* No entry for cars from 10:00 p.m. to 7:00 a.m. the following day.

* We will direct you to nearby parking if the parking lot is full, if the height or weight of your car is over limitations, or if your particular type of car is unsuitable. Please pay at the parking you stay.

Daiwa Roynet Hotel AKITA-EKIMAE

2-3-20 Nakadori, Akita-shi, Akita 010-0001

Phone 018-893-4577 Fax 018-893-4677

<https://www.daiwaroynet.jp/akita-ekimae/>

Check in 14:00 / Check out 11:00