

Daiwa Roynet Hotel FUKUYAMA-EKIMAE

A modern, functional hotel located at the gateway to Fukuyama, a town with an abundance of natural beauty and culture, where our guests can relax.

About a 1-minute walk from the South Exit of JR Fukuyama Station. Fukuyama is not only close to the sea and mountains, but also offers a variety of cultural activities. Known as the "Rose City," Fukuyama welcomes all visitors with what this flower represents: thoughtfulness, kindness, and the spirit of mutual assistance. The hotel provides smooth access to Kurashiki, Okayama and Hiroshima as well as to the Shimanami Sea Route. Staying with us will give you an ideal base for business or sightseeing in Fukuyama.



ダイワロイネットホテル 福山駅前

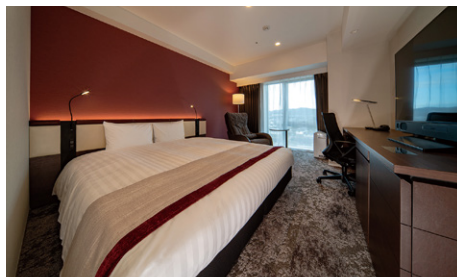




Superior Twin Room (28m²)



Superior Double Room (22m²)



Deluxe King Room (28m²)

Facilities and amenities

Free high-speed Internet (Wi-Fi)

Duvet / Liquid crystal display television set / Energy-saving system / Refrigerator (empty) / Air purifier with humidifier / Safe / Trouser press / Hair dryer / Bidet-style toilet seat / Charger for mobile devices / Electric kettle / Free satellite channels / VOD (Video on demand) / Hair shampoo / Hair rinse / Body soap / Face and hand soap / Fabric deodorizer / Toothbrush and toothpaste / Razor / Hair comb / Cotton buds / Shoehorn / Shoe polisher / Clothes brush / Hangers / Bath towel / Face towel / Body wash towel / Bath mat / Nightwear / Washable slippers

Amenities for ladies (available at the front desk) / Amenities for kids (available at the front desk)



Junior Suite Fourth Room (50m²)

All guest rooms except universal rooms have separate bathroom and toilet. You can enjoy a relaxing bath even when multiple guests are using the room.



Separate toilet and bathroom (example)

We also have deluxe double rooms (24m²), junior suite twin rooms (52m²), and universal twin rooms (28m²).
(191 rooms in total)

Facilities and services

Rental computer (JPY880 per night, including tax) / Copy and fax services (subject to fees) / Parcel delivery service / Microwave / Vending machine / Ice / Laundromat / Auto adjustment machine / AED / Evacuation chair / Wheelchair

Restaurant

LOCALO CAFE (1F) 7:00 a.m. to 10:00 p.m.

LOCALO CAFE

Breakfast (1F: LOCALO CAFE)

Adding a Japanese flavor to Western dishes, we promise they will leave you with a memory of the unique tastes of Hiroshima.

7:00 a.m. to 10:00 a.m. (please enter by 10:00 a.m.)
Adults (13 years and older),
Children (from 6 years old to 12 years old): JPY1,650 (including tax)



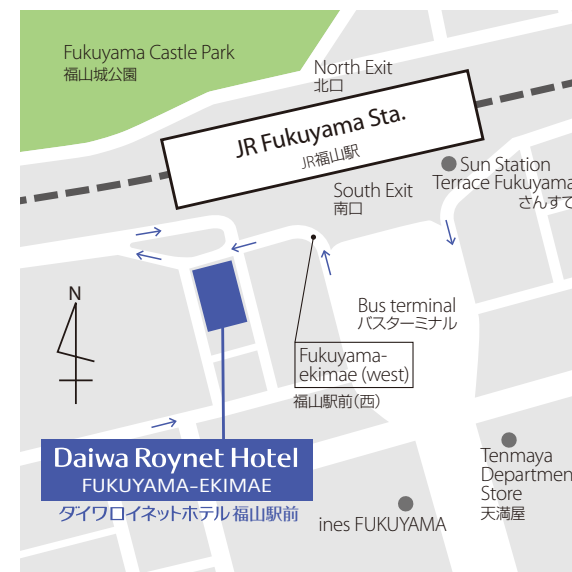
Local area guide (access from the hotel)

Fukuyama Castle / Fukuyama Castle Museum: About a 3-minute walk

Tomonoura: About a 30-minute drive

Onomichi: About a 20-minute drive

Fukuyama Zoo: About a 20-minute drive



- 1) About a 1-minute walk from South Exit of JR Fukuyama Station
- 2) About 50 minutes from Hiroshima Airport by limousine bus
- 3) About a 15-minute drive from Fukuyama-Higashi IC on the Sanyo Expressway

Hotel Parking

Fee: JPY1,200 per car from 2:00 p.m. to 11:00 a.m. of the following day (including tax)

Operating hours: 7:00 a.m. to 10:00 p.m.

Capacity: 38 cars (18 standard-sized cars, 20 high-roof cars)

Vehicle restrictions: Maximum length – 5,050mm / Maximum width – 1,840mm /
Maximum height – 2,000mm (high-roof cars)

* No entry for cars outside these hours.

* Available on arrival. We do not accept prior reservations.

* We will direct you to nearby parking if the parking lot is full, if the height or weight of your car is over limitations or if your particular type of car is unsuitable.

Daiwa Roynet Hotel FUKUYAMA-EKIMAE

2-16 Sannomaru-cho, Fukuyama-shi, Hiroshima 720-0066

Phone 084-973-6880 Fax 084-973-6881

<https://www.daiwaroynet.jp/fukuyama-ekimae>

Check in 14:00 / Check out 11:00