

# Daiwa Roynet Hotel GINZA

A relaxed, functional hotel —  
A place where you will feel completely  
at home. An ideal base for business  
or sightseeing in the center of the Capital.

Ginza, Tokyo – a district where tradition meets  
the latest trends.

In this attractive location,  
Daiwa Roynet Hotel GINZA would like to serve  
as your base in the center of the capital,  
whether your trip is for sightseeing or business.



ダイワロイネットホテル銀座



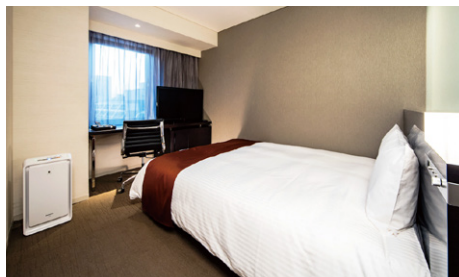




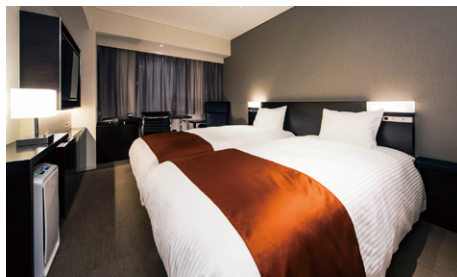
**Superior Room** (21m<sup>2</sup>)



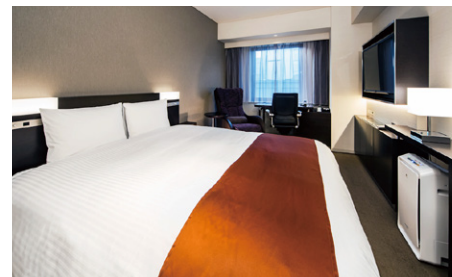
**Junior Suite Twin Room** (56m<sup>2</sup>)



**Standard Room** (18m<sup>2</sup>)



**Standard Twin Room** (23m<sup>2</sup>)



**Deluxe Double Room** (23m<sup>2</sup>)



**Junior Suite Double Room** (56m<sup>2</sup>)

We also have ladies' superior rooms (21m<sup>2</sup>), ladies' deluxe double rooms (23m<sup>2</sup>), ladies' standard twin rooms (23m<sup>2</sup>) and universal rooms (21m<sup>2</sup>).  
(270 rooms in total)

## Facilities and amenities

Free high-speed Internet (Wi-Fi) / VPN connectivity (all guest rooms have LAN cables)

Duvet / Liquid crystal display television set / Energy-saving system / Refrigerator (empty) / Air purifier with humidifier / Safe / Trouser press / Hair dryer / Bidet-style toilet seat / Charger for mobile devices / Electric kettle / Free satellite channels / VOD (Video on demand) / Hair shampoo / Hair rinse / Body soap / Face and hand soap / Fabric deodorizer / Toothbrush and toothpaste / Razor / Hair comb / Cotton buds / Shoehorn / Shoe polisher / Clothes brush / Hangers / Bath towel / Face towel / Body wash towel / Bath mat / Nightwear / Washable slippers

Amenities for ladies (available at the front desk) / Amenities for kids (available at the front desk)

All guest rooms have separate bathroom and toilet.

All ladies' rooms have an ionic facial steamer, an ionic hair dryer, and a foot massager.



Separate toilet and bathroom (example)



## Facilities and services

Rental computer (JPY880 per night, including tax) / Copy and fax services (subject to fees) / Public computer (available in the lobby) / Parcel delivery service / Microwave / Vending machine / Laundromat / Ice / Auto adjustment machine / AED / Evacuation chair / Wheelchair

## Restaurants and stores

Natural Lawson (1F) Open 24 hours

Restaurant the Kitchen Salvatore Cuomo GINZA (2F): Breakfast- 7:00 a.m. to 10:30 a.m. / lunch- 11:30 a.m. to 3:30 p.m. / teatime- 3:00 p.m. to 5:00 p.m. (weekends and holidays only) / dinner- 5:30 p.m. to 11:30 p.m.



## Breakfast (2F: the Kitchen Salvatore Cuomo GINZA)

"Salvatore" is best known as a popular Italian restaurant, but its breakfast is offered in buffet style with both Japanese and Western dishes. Please enjoy our hotel-style breakfast.

7:00 a.m. to 10:30 a.m. (please enter by 10:00 a.m.)  
Adults (13 years and older): JPY2,000 (including tax) /  
Children (from 6 years old to 12 years old): JPY1,200 (including tax) /  
Infants (5 years old and younger): Free  
Breakfast vouchers are available at the front desk.



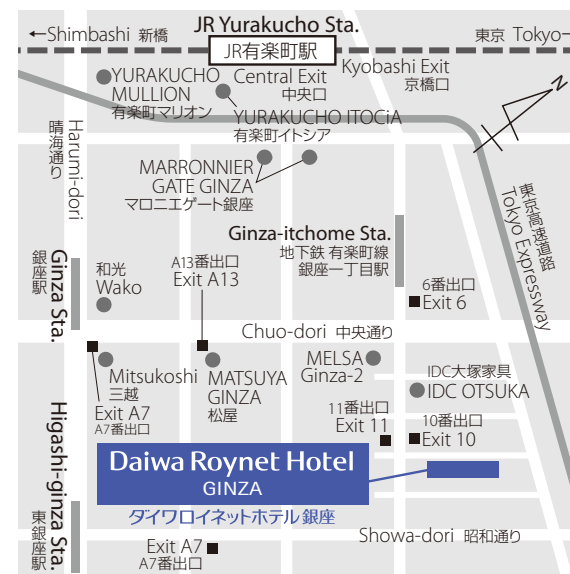
## Local area guide (access from the hotel)

**Kabukiza Theatre:** About a 7-minute walk

**Imperial Palace:** About a 17-minute walk

**Tokyo Skytree:** About 20 minutes by public transportation

**Tokyo International Forum:** About a 9-minute walk



- 1) About a 20-second walk from Exit 10 of Ginza-itchome Station on the subway Tokyo Metro Yurakucyo Line / about a 1-minute walk from Exit 6
- 2) About a 4-minute walk from Ginza Station on the subway Tokyo Metro Marunouchi Line, Hibiya Line, and Ginza Line
- 3) About a 5-minute walk from Higashi-ginza Station on the subway Tokyo Metro Hibiya Line and Toei Asakusa Line
- 4) About an 8-minute walk from Yurakuchō Station on the JR Yamanote Line and Keihin-Tohoku Line
- 5) About 35 minutes by Keikyu Line or Monorail from the Haneda Airport

Hotel parking  
Fee: JPY2,000 per night per car (including tax)  
Capacity: 50 cars

\* Available on arrival. We do not accept prior reservations.

\* We will direct you to nearby parking if the parking lot is full, if the height or weight of your car is over limitations, or if your particular type of car is unsuitable.

## Daiwa Roynet Hotel GINZA

1-13-15 Ginza, Chuo-ku, Tokyo 104-0061

Phone 03-5159-1380 Fax 03-5159-1381

<https://www.daiwaroynet.jp/ginza>

Check in 14:00 / Check out 11:00