

# Daiwa Roynet Hotel KAWASAKI

A relaxed, functional hotel —  
A place where you will feel completely  
at home. An ideal base for business  
or sightseeing in Keihin.

About a 9-minute ride to Shinagawa Station, about  
an 8-minute ride to Yokohama Station, and about  
a 16-minute ride to Haneda Airport on the Keikyū Line.  
Kawasaki city, a center of industry and entertainment,  
is the heart of the Keihin area.

Daiwa Roynet Hotel KAWASAKI would like to serve  
as your base in Kawasaki,  
whether your trip is for sightseeing or business.



ダイワロイネットホテル川崎





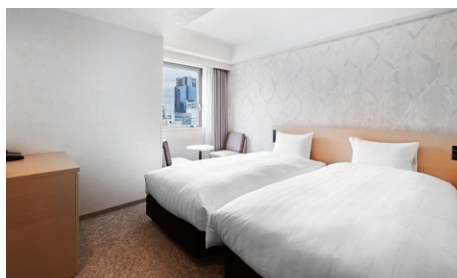
**Standard Room** (18m<sup>2</sup>)



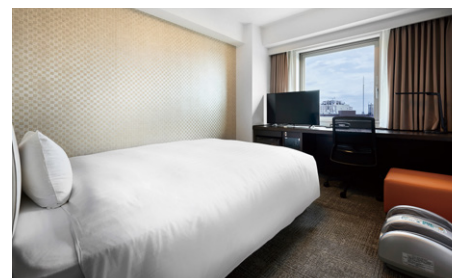
**Hollywood Twin Room** (26m<sup>2</sup>)



**Relax Room** (20m<sup>2</sup>)



**Light Twin Room** (21m<sup>2</sup>)



**Superior Room** (18m<sup>2</sup>)



**Deluxe Double Room** (22m<sup>2</sup>)

We also have corner rooms (18.0m<sup>2</sup>) and universal twin rooms (22.0m<sup>2</sup>).

(240 rooms in total)

## Facilities and amenities

Wireless LAN (Wi-Fi standard) \* LAN connection is available in some rooms.

Duvet / Liquid crystal display television set / Energy-saving system / Refrigerator (empty) / Air purifier with humidifier / Trouser press / Hair dryer / Bidet-style toilet seat / Charger for mobile devices / Electric kettle / Free satellite channels / VOD (Video on demand) / Hair shampoo / Hair rinse / Body soap / Face and hand soap / Fabric deodorizer / Toothbrush and toothpaste / Razor / Hair brush / Cotton buds / Shoehorn / Shoe polisher / Hangers / Bath towel / Face towel / Body wash towel / Bath mat / Nightwear / Slippers

Amenities for kids (available at the front desk)

## Facilities and services

Rental computer (JPY880 per night, including tax) / Copy and fax services (subject to fees)  
Parcel delivery service / Microwave / Vending machine / Laundromat / Ice / Auto adjustment machine / AED / Evacuation chair / Wheelchair

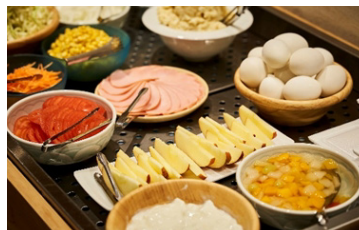
## Restaurants and stores

FamilyMart (1F) <Convenience store> Open 24 hours

Tsukuzenkofuku (2F) <Restaurant> Breakfast – 7:00 a.m. to 10:00 a.m.,

For inquiries about lunch and dinner, please contact the restaurant directly.

\* The restaurant will be closed on an irregular basis.



## Breakfast (2F: Tsukuzenkofuku)

Boost your energy with a morning buffet featuring a full range of Japanese, Western and Chinese dishes!

\* Please note the menu may be changed without notice.

7:00 a.m. to 10:00 a.m. (please enter by 9:30 a.m.)

Adults (13 years and older): JPY1,300 (including tax) /

Children (from 6 to 12 years old): JPY700 (including tax)

Vouchers are sold at the front desk.

Guests can also pay at the restaurant on the day.

## Local area guide (access from the hotel)

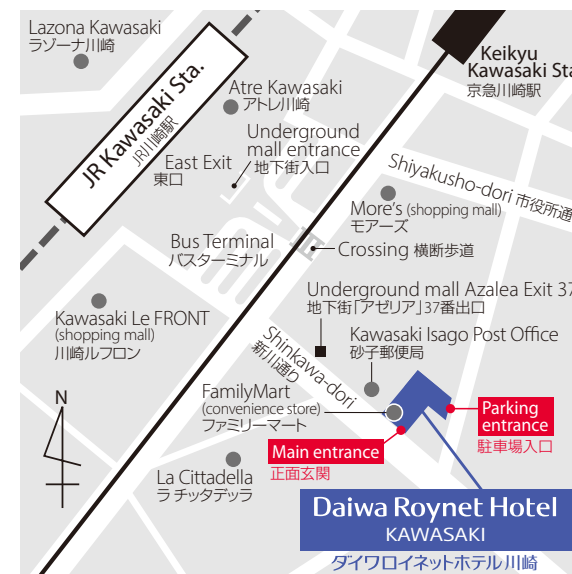
**Lazona Kawasaki Plaza** (shopping mall): About a 5-minute walk from the hotel

**Kawasaki Daishi** (temple): About 15 minutes by public transportation from the hotel

**La Cittadella** (shopping plaza): About a 1-minute walk from the hotel

**Umihotaru PA** (parking area with shopping mall): About a 30-minute drive from the hotel

**Maxell Aqua Park Shinagawa** (entertainment facility with an aquarium): About 25 minutes by public transportation from the hotel



- 1) About a 5-minute walk from the east exit of JR Kawasaki Station
- 2) About a 5-minute walk from Keikyu Kawasaki Station
- 3) About a 9-minute ride from JR Shinagawa Station to JR Kawasaki Station on the Tōkaidō-Honsen
- 4) About an 8-minute ride from JR Yokohama Station to JR Kawasaki Station on the Tōkaidō-Honsen
- 5) About a 16-minute ride from Haneda Airport to Keikyu Kawasaki Station on the Keikyu Line

Hotel parking

Fee: JPY1,500 per night per car (2:00 p.m. to 11:00 a.m. the following day, including tax)

Capacity: 24 standard-sized cars; 8 high-roof cars

Vehicle restrictions: maximum height for high-roof car: 2,050mm;  
maximum height for standard-sized car: 1,550mm

\* Available on arrival. We do not accept prior reservations.

\* We will direct you to associated parking if the parking lot is full, if the height or weight of your car is over limitations, or if your particular type of car is unsuitable.

## Daiwa Roynet Hotel KAWASAKI

2-6-15, Isago, Kawasaki-ku, Kawasaki-shi, Kanagawa 210-0006

Phone 044-210-2055 Fax 044-210-2056

<https://www.daiwaroynet.jp/kawasaki>

Check in 14:00 / Check out 11:00