

# Daiwa Roynet Hotel KOBE-SANNOMIYA

A relaxed, functional hotel —  
A place where you will feel completely  
at home. An ideal base for business  
or sightseeing in Kobe.

Kobe, an exotic destination that evokes nostalgia.  
The view of the sea from Mt. Rokko and the Port of Kobe adds  
color and a modern atmosphere to the City of Kobe.  
Daiwa Roynet Hotel KOBE-SANNOMIYA is located a little way  
away from the hustle and bustle of downtown, but is close to  
Sannomiya Station, which is served by several railway lines.  
The hotel offers a quiet place to stay and would like to  
serve as your base in Kobe,  
whether your trip is for sightseeing or business.



ダイワロイネットホテル 神戸三宮



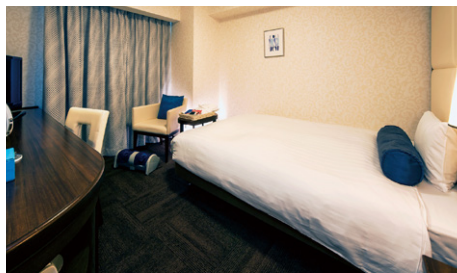




**Single Room** (18m<sup>2</sup>)



**Double Room** (18m<sup>2</sup>)



**Ladies Room** (21m<sup>2</sup>)

## Facilities and amenities

Free high-speed Internet (Wi-Fi) / VPN connectivity (all guest rooms have LAN cables)

Duvet / Liquid crystal display television set / Energy-saving system / Refrigerator (empty) / Air purifier with humidifier / Trouser press / Hair dryer / Bidet-style toilet seat / Charger for mobile devices / Electric kettle / Free satellite channels / VOD (Video on demand) / Hair shampoo / Hair rinse / Body soap / Face and hand soap / Fabric deodorizer / Toothbrush and toothpaste / Razor / Hair comb / Cotton buds / Shovel / Shoe polisher / Clothes brush / Hangers / Bath towel / Face towel / Body wash towel / Bath mat / Nightwear / Washable slippers

Amenities for ladies (available at the front desk) / Amenities for kids (available at the front desk)



**Hollywood Twin Room** (27m<sup>2</sup>)



**Sleeping Environment System Room** (18m<sup>2</sup>)

This room supports sleeping and waking with light, music and vibration when you go to bed and when you wake up.



**Universal Room** (27m<sup>2</sup>)

(225 rooms in total)

## Facilities and services

Rental computer (JPY880 per night, including tax) / Copy and fax services (subject to fees) / Public computer (available in the lobby) / Parcel delivery service / Microwave / Vending machine / Laundromat / Ice / Auto adjustment machine / AED / Evacuation chair / Wheelchair



## Restaurants and stores

FamilyMart (1F) Open 24 hours

Tezukuriizakaya Kappougi (1F)

Breakfast – 7:00 a.m. to 10:00 a.m. / Lunch – 11:30 a.m. to 1:30 p.m. / Dinner – 6:00 p.m. to 11:00 p.m. (Mon-Fri),  
6:00 a.m. to 10:00 p.m. (Saturday) / Closed Sunday and public holidays (open only for breakfast)



## Breakfast (1F: Kappougi)

A variety of Japanese and Western dishes are served in buffet style. Steamed rice and hot miso soup. Carefully handmade nutritious dishes. It welcomes guests with an extensive menu and a spacious comfortable room.

It is our pleasure to serve you carefully prepared dishes to set you up physically and mentally for the day ahead.

Time: 7:00 a.m. to 10:00 a.m. (Please enter by 9:30 a.m.)

Breakfast charge: Advance voucher – Adult: JPY830 (including tax) /

Children of elementary school age: JPY420 (including tax) / Children under elementary school age: Free

On the day of voucher – Adult: JPY1,000 (including tax) / Children of elementary school age: JPY500 (including tax)

/ Children under elementary school age: Free

Breakfast vouchers are available at the reception.



## Local area guide (access from the hotel)

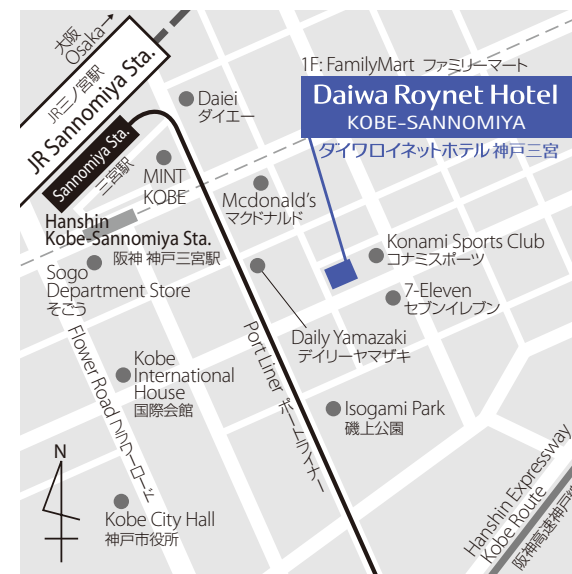
**Kobe Kitano Ijinkan-gai:** About a 20-minute walk from the hotel

**The Former Foreign Settlement of Kobe:** About a 10-minute walk

**Kobe Nunobiki Herb Gardens & Ropeway:** About 20 minutes by public transportation

**Nankinmachi:** About a 5-minute walk from Motomachi Station

**Kobe Harborland:** About a 10-minute drive / About 15 minutes by public transportation



- 1) About a 7-minute walk from the East Gate of JR Sannomiya Station
- 2) About a 7-minute walk from Hankyu Kobe-Sannomiya Station and Port Liner Sannomiya Station
- 3) About a 5-minute walk from Hanshin Kobe-Sannomiya Station
- 4) About 20 minutes from Kobe Airport by Port Liner
- 5) About a 5-minute walk from Ikutagawa IC on the Hanshin Expressway Kobe Route

Hotel parking

Fee: JPY1,500 per night per car (2:00 p.m. to 11:00 a.m. the following day, including tax. JPY200 per 60 minutes overtime after former designated time, including tax.)

Operating hours: 7:00 a.m. to 11:00 p.m.

Capacity: 20 standard cars / 12 high-roof cars

Vehicle restrictions: Maximum height – 155 cm for standard cars / 200 cm for high-roof cars

\* We do not accept prior reservations.

\* We will direct you to nearby parking if the parking lot is full, if the height or weight of your car is over limitations or if your particular type of car is unsuitable.

## Daiwa Roynet Hotel KOBE-SANNOMIYA

5-1-6 Gokoudori, Chuo-ku, Kobe-shi, Hyogo 651-0087

Phone 078-291-4055 Fax 078-291-4056

<https://www.daiwaroynet.jp/kobesannomiya>

Check in 14:00 / Check out 11:00