

Daiwa Roynet Hotel

KORIYAMA-EKIMAE

Koriyama City is located in central Fukushima prefecture and is one of the major transportation hubs for the Tohoku district.

We guarantee that your stay in the mercantile city of Koriyama will be a pleasant one.

Koriyama City gives you ideal access to the whole of Fukushima prefecture including Fukushima City in the north, Aizuwakamatsu City in the west, and Iwaki City in the east.

We offer our guests an outstanding location just a one-minute walk from JR Koriyama station.

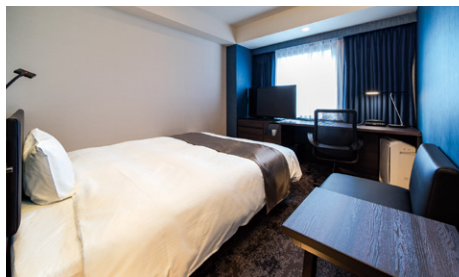


ダイワロイネットホテル 郡山駅前





Moderate Double Room (21m²)



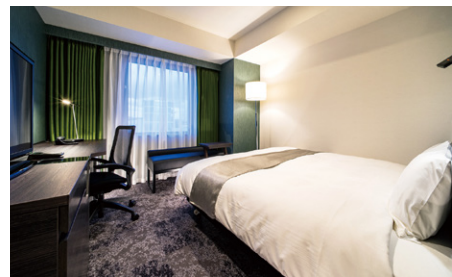
Standard Room (18m²)



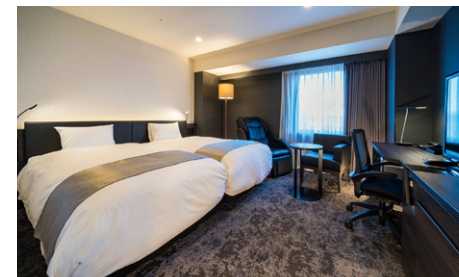
Moderate Twin Room (26m²)



Deluxe Twin Room (29m²)



Deluxe Double Room (25m²)



Grand Deluxe Twin Room (27m²)

Other types of rooms: Universal double (25m²) / Total 216 rooms

Facilities and amenities

Free high-speed Internet (Wi-Fi) / VPN connectivity (all guest rooms have LAN cables)

Duvet / Liquid crystal display television set / Energy-saving system / Refrigerator (empty) / Air purifier with humidifier / Trouser press / Hair dryer / Bidet-style toilet seat / Charger for mobile devices / Electric kettle / Free satellite channels / VOD (Video on demand) / Hair shampoo / Hair rinse / Body soap / Face and hand soap / Fabric deodorizer / Toothbrush and toothpaste / Razor / Hair comb / Cotton buds / Shoehorn / Clothes brush / Shoe polisher / Hangers / Bath towel / Face towel / Body wash towel / Bath mat / Nightwear / Washable slippers

Amenities for ladies (available at the front desk) / Amenities for kids (available at the front desk)

Our guest rooms are equipped with a separate bathroom and toilet except in standard-type and universal double-type rooms.



Separate bathroom and toilet (example)

Meeting room (4F: 69m²)

Our meeting room can be used for a variety of purposes. It has ample facilities and services such as basic furnishing, Internet connectivity as well as rental fixtures. It is suitable for conferences, training, job interviews, or presentations.



Available from 9:00 a.m. to 9:00 p.m.

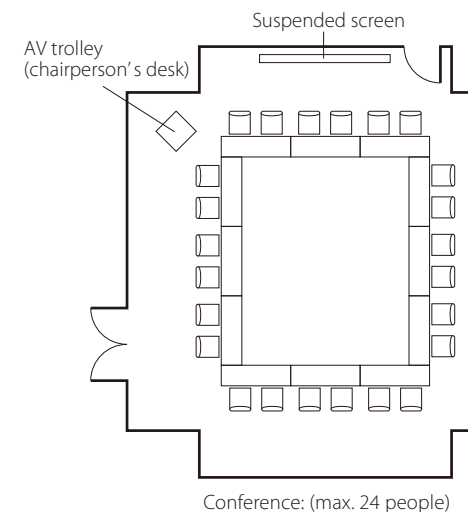
Price (including tax): JPY10,000 per hour



Capacity:

Classroom	Conference
30 people	24 people

Room layout example:



Rental fixtures:

Rental computer (limited units)	JPY880 per unit (including tax)
Projector	Free
Electronic blackboard	Free
Laser pointer	Free
Extension cord	Free
Microphone (wireless/ wired)	Free
Internet connection	Free

* Contact us for detailed information about each fixture.

* Fully equipped with wired and wireless LAN

Cancellation charge:

Previous day	Same day
20%	100%

Facilities and services

Rental computer (JPY880 per night, including tax) / Copy and fax services (subject to fees) / Public computer (available in the lobby) / Parcel delivery service / Microwave / Vending machine / Laundromat / Ice / Auto adjustment machine / AED / Evacuation chair / Wheelchair

Restaurants and stores

1F: Toho Bank, Seven-Eleven (24-hour operation), Koori (Sushi and Japanese cuisine), Doutor Coffee shop
2F: Gyutan Sumiyaki Rikyu (chargrilled ox tongue), Suganami (Japanese cuisine), Koriyama Shokuniku Center (grilled beef), Restaurant Visconti
3F: Koriyamaekimae-Blood Donation Room, first (beauty salon)

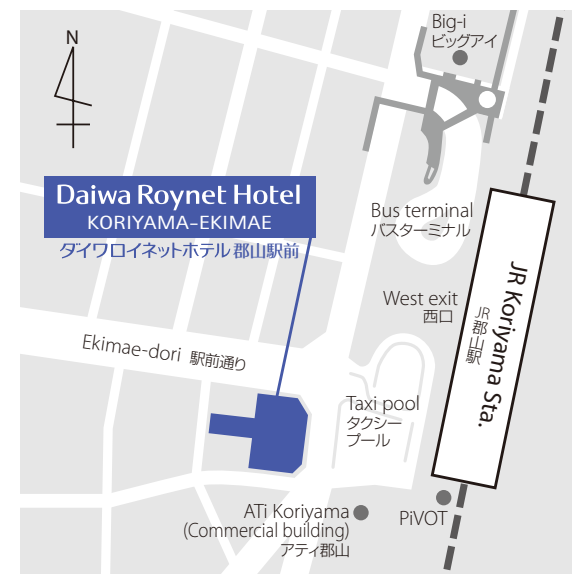
Breakfast (2F: Restaurant Visconti)

Daiwa Roynet Hotel KORIYAMA EKIMAE offers a delicious breakfast to boost your energy for the day ahead.

6:30 a.m. to 10:00 a.m. (please enter by 9:40 a.m.)

Adults (13 years and older): JPY1,300 (including tax) /

Set menu for children (available for children of 12 years old or under): JPY700 (including tax)



- 1) JR: About a 1-minute walk from the west exit of JR Koriyama Station
- 2) Fukushima Airport: About a 50-minute ride by limousine bus to the bus terminal in front of JR Koriyama Station then a 1-minute walk from the bus terminal
- 3) Tohoku Motorway: About a 15-minute drive from Koriyama exit

Hotel parking (multi-story parking lot)

Fee: JPY1,000 per night per car (including tax)

Capacity: 16 standard-sized cars (up to 1.55m in height), 34 high-roof cars (up to 2.05m in height)

* Available on arrival. We do not accept prior reservations.

* We will direct you to nearby parking if the hotel parking lot is full, the height or weight of your car are over the limitations or your particular type of car is unsuitable.

* Please contact us for more information.

Local area guide (access from the hotel)

Big Palette Fukushima (convention center): About 15 minutes by public transportation from the hotel

Lake Inawashiro: About a 40-minute drive from the hotel

Dekoyashiki (demonstration of traditional art crafts in Fukushima with shop): About a 20-minute drive from the hotel

Daiwa Roynet Hotel KORIYAMA-EKIMAE

1-6-10 Ekimae, Koriyama-shi, Fukushima 963-8002

Phone 024-927-4855 Fax 024-927-4856

<https://www.daiwaroynet.jp/koriyamaekimae>

Check in 14:00 / Check out 11:00