

Daiwa Roynet Hotel KYOTO-HACHIJOGUCHI

Designed in “Kyoto Modern Style”
With the spirit of hospitality,
We wish you a pleasant stay at our hotel.

A 4-minute walk from the Hachijo-East entrance
of JR Kyoto Station –

A city of tradition and history whose charms attract visitors
from all over the world

At the gateway to Kyoto, Japan’s ancient capital

Daiwa Roynet Hotel Kyoto-Hachijoguchi

Modern in style, yet exuding the elegance of earlier times

The hotel that will become your go-to accommodation
whenever you’re in Kyoto.



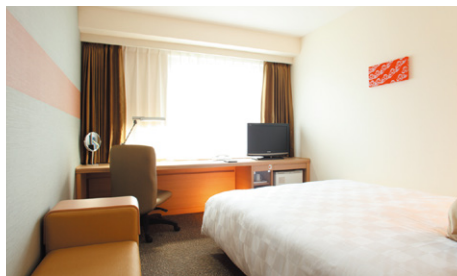
ダイワロイネットホテル 京都八条口



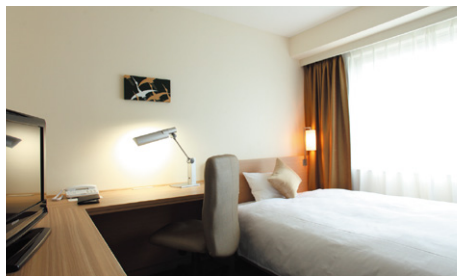
Wide Deluxe Twin Room (36m²)



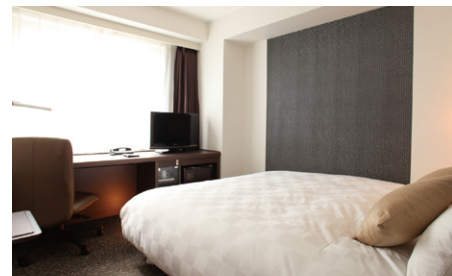
Deluxe Double Room (26m²)



Moderate Room (18m²)



Business Room (18m²)



Superior Room (20m²)



Ladies Twin Room (23m²)

We also have twin rooms (23m²), universal twin rooms (28m²) and deluxe twin rooms (28m²). (Total 192 rooms)

Facilities and amenities

Free high-speed Internet (Wi-Fi) / VPN connectivity (all guest rooms have LAN cables)

Duvet / Liquid crystal display television set / Energy-saving system / Refrigerator (empty) / Air purifier with humidifier / Trouser press / Hair dryer / Bidet-style toilet seat / Charger for mobile devices / Electric kettle / Free satellite channels (overseas TV programs are not available) / VOD (Video on demand) / Hair shampoo / Hair rinse / Body soap / Face and hand soap / Fabric deodorizer / Toothbrush and toothpaste / Razor / Hair brush / Cotton buds / Shoehorn / Shoe polisher / Hangers / Bath towel / Face towel / Body wash towel / Bath mat / Nightwear / Slippers

Amenities for kids (available at the front desk)

Facilities and services

Rental computer (JPY880 per night, including tax) / Copy and fax services (subject to fees) / Public computer (available in the lobby) / Parcel delivery service / Microwave / Vending machine / Laundromat / Ice / Auto adjustment machine / AED / Evacuation chair / Wheelchair



Breakfast (Roynet Café, 1F)

Buffet-style Japanese and Western food focused especially on Obanzai, traditional Kyoto home cooking. We offer a variety of carefully prepared dishes with home-made flavors typical of a Kyoto family meal.

6:30 a.m. to 10:00 a.m. (last order is 9:30 a.m.)

Adult: JPY1,320 (including tax) / Children (elementary school age): JPY770 (including tax) / Infants up to 5 years old: Free
Breakfast vouchers for the day are available at the front desk.

* Breakfast is served only to our registered guests.

Local area guide

(access from the hotel)

Toji temple: About a 15-minute walk from the hotel

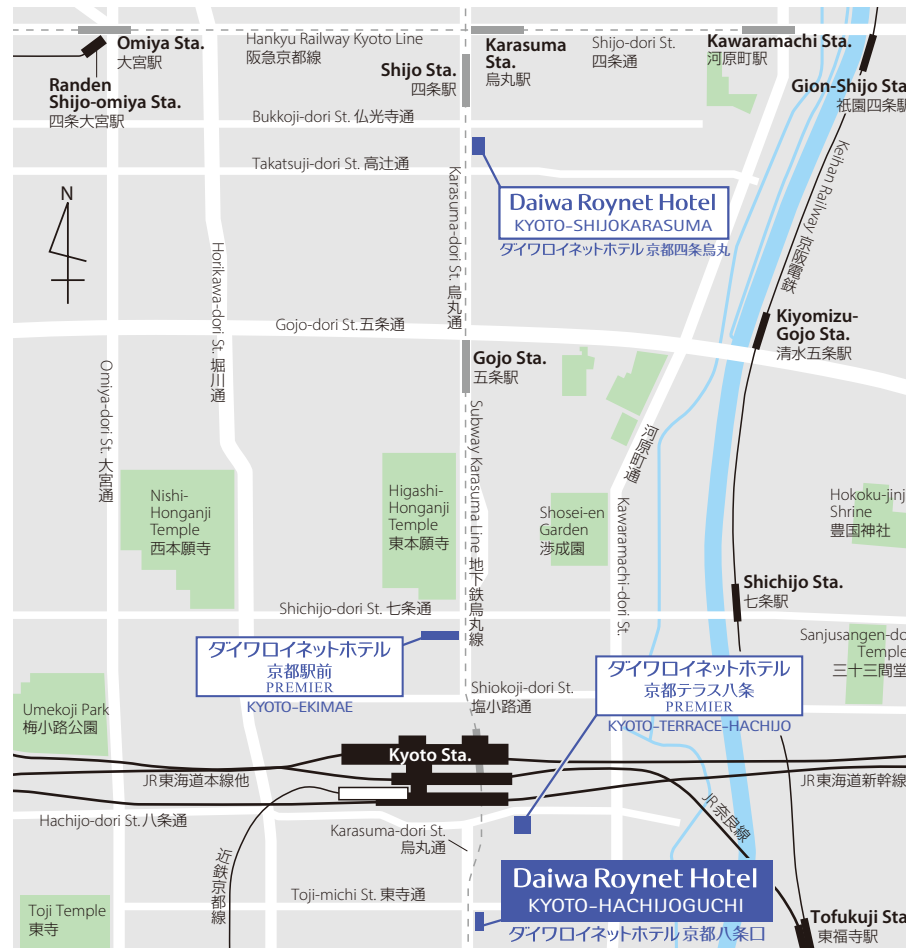
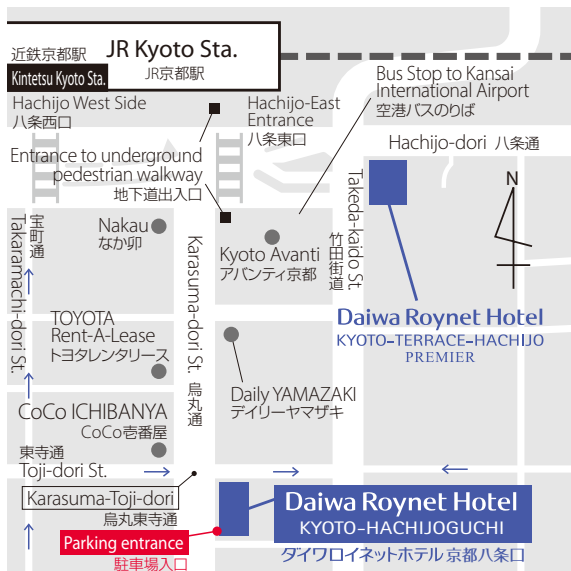
Tofuku-ji temple: About 20 minutes by public transportation from the hotel

Fushimi Inari Taisha shrine: About 20 minutes by public transportation from the hotel

Sanjusangendo temple: About 15 minutes by public transportation from the hotel

Kinkaku-ji temple: About 45 minutes by public transportation from the hotel

Kiyomizu-dera temple: About 30 minutes by public transportation from the hotel



- 1) About a 4-minute walk from JR Kyoto Station Hachijo-East entrance (close to the Shinkansen) / About a 6-minute walk from Kyoto Station on the City Subway / About a 6-minute walk from Kyoto Station on the Kintetsu Railway Kyoto Line
- 2) About 55 minutes by Airport Limousine from Osaka International Airport (Itami Airport) to JR Kyoto Station and about a 4-minute walk from the bus stop at the Hachijo-guchi entrance.
- 3) About 105 minutes by Airport Limousine from Kansai International Airport to JR Kyoto Station and about a 4-minute walk from the bus stop at the Hachijo-guchi entrance.
- 4) From the Meishin Expressway: About a 30-minute drive from Kyoto-higashi IC / About a 15-minute drive from Kyoto-minami IC
- 5) About a 5-minute drive from the Kamitoba exit of Hanshin Expressway No.8 Kyoto Route

Daiwa Roynet Hotel KYOTO-HACHIJOGUCHI

9-2 Kitakarasuma-cho, Higashikujou, Minamiku, Kyoto-shi, Kyoto 601-8017

Phone 075-693-0055 Fax 075-693-0056

<https://www.daiwaroynet.jp/kyoto-hachi>

Hotel Parking (multi-story parking lot)

Fee: JPY1,500 / night (including tax) Operating hours: 7:00 a.m. to 10:00 p.m.; capacity: 20 vehicles.

* Available on arrival. We do not accept prior reservations.

* We will direct you to nearby parking lots or metered parking if the hotel parking lot is full, if the height of your car is over limitations or if your particular type of car is unsuitable. * Contact us for further information.

Check in 14:00 / Check out 11:00