

Daiwa Roynet Hotel MATSUYAMA

A relaxed, functional hotel —
where you will feel completely at home.
An ideal base for business and
sightseeing in Matsuyama.

Matsuyama City, the prefectural capital of Ehime Prefecture,
is famous for its hot springs, its castle, and its literary associations.

It has good access to a wonderful spa, Dōgo Onsen,
frequented by Natsume Soseki, one of Japan's great literary figures,
as well as the beautiful Matsuyama Castle.

Daiwa Roynet Hotel MATSUYAMA, located on Ōkaidō,
the city's busiest downtown street, would like to serve as your base
in Matsuyama, whether your trip is for sightseeing or business.



ダイワロイネットホテル松山

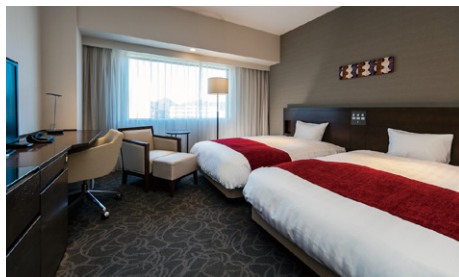




Standard Room A (21m²) - Main building



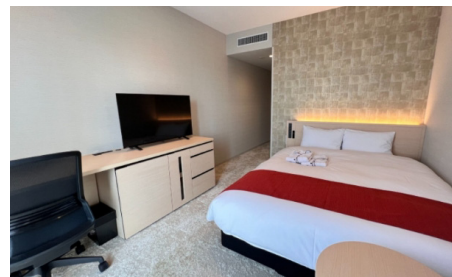
Junior Suite (family) (48m²) - Annex



Twin Room A (28m²) - Main building



Corner Twin Room (28m²) - Main building



Moderate Double Room (24m²) - Annex



Superior Triple Room (29m²) - Annex

Facilities and amenities

Wireless LAN (Wi-Fi standard) / VPN connectivity (all guest rooms in the main building have LAN cables)

Duvet / Liquid crystal display television set / Energy-saving system / Refrigerator (empty) / Air purifier with humidifier / Trouser press / Hair dryer / Bidet-style toilet seat / Charger for mobile devices / Electric kettle / Free satellite channels / VOD (Video on demand) / Hair shampoo / Hair rinse / Body soap / Face and hand soap / Fabric deodorizer / Toothbrush and toothpaste / Razor / Hair brush / Cotton buds / Shoehorn / Shoe polisher / Clothes brush / Hangers / Bath towel / Face towel / Body wash towel / Bath mat / Nightwear / Slippers

Amenities for kids (available at the front desk)

We also have various types of rooms (18.00 ~ 49.00 m²) in the main building as well as the ANNEX.
(Total 307 rooms)

Facilities and services

Rental computer (JPY880 per night, including tax) / Copy and fax services (subject to fees)
Parcel delivery service / Microwave / Vending machine / Laundromat / Ice / Auto adjustment machine / AED / Evacuation chair / Wheelchair

Meeting room (2F: 77.7m²)

Our meeting room can be used for a variety of purposes. It has ample facilities and services such as basic furnishing, Internet connectivity as well as rental fixtures. It is suitable for conferences, training, job interviews, or presentations.



Available from 8:00 a.m. to 9:00 p.m.

Capacity

	Classroom	Hollow Square
Entire room: 77m ²	42 people	28 people
West half: 37m ²	18 people	19 people
East half: 40m ²	24 people	20 people

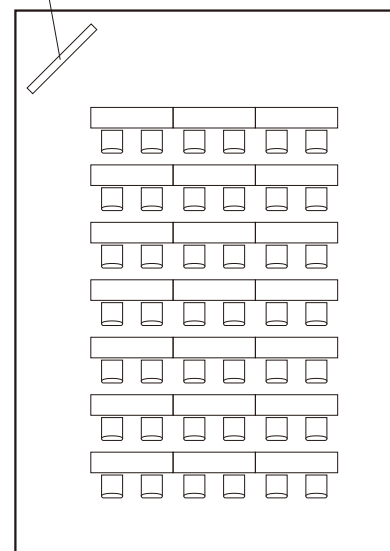


Price (including tax)

	Entire room	Half room
First hour	JPY20,000	JPY10,000
Extension charge	JPY10,000 per hour	JPY5,000 per hour

Room layout example

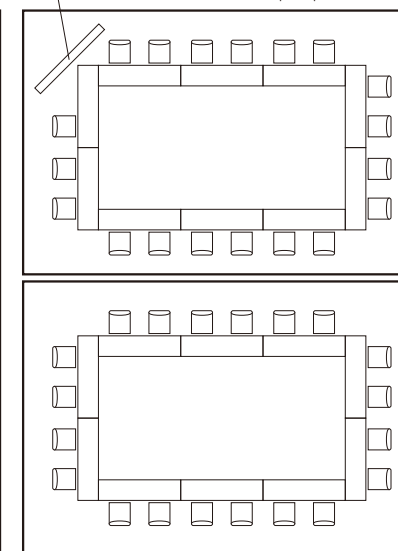
Electronic blackboard



Entire room: Classroom (max. 42 people)

Electronic blackboard

West half: Hollow Square
(max. 19 people)



East half: Hollow Square (max. 20 people)

Rental fixtures (including tax)

Rental computer (limited units)	JPY880 per unit
Microphone (wireless/ pin microphone)	Free
Projector	Free
Blu-ray player	Free
Internet connection	Free
Electronic blackboard / Whiteboard	Free
Laser pointer	Free
Screen	Free
Extension cord / LAN cable	Free

* Contact us for detailed information about each fixture.

* Fully equipped with wired and wireless LAN

* Contact us for detailed information about availability, meal arrangements and so on.

Cancellation charge

Previous day	Same day	Unused without notice
20%	80%	100%

Restaurants

SALVATORE CUOMO & BAR (1F)

Breakfast: 6:30 a.m.-10:30 a.m., Lunch: 11:30 a.m.-3:00 p.m., Dinner: 5:00 p.m.-10:30 p.m.

Yoshicho (1F) Breakfast: 6:30 a.m.-10:30 a.m., Dinner: 6:00 p.m.-10:00 p.m.

Breakfast

Please enjoy breakfast, made with carefully selected ingredients. (These dishes are images.)

(1F: SALVATORE CUOMO & BAR) Japanese and Western food buffet



(1F: Yoshicho) Japanese-style breakfast



6:30 a.m. to 10:30 a.m. (Please enter by 10:00 a.m.)

Adults (13 years and older): JPY1,800 (including tax) / Children (6 to 12 years old): JPY900 (including tax)

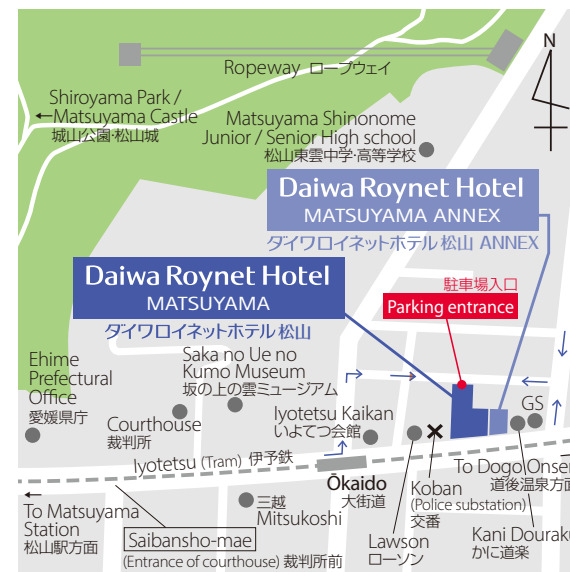
Local area guide (access from the hotel)

Matsuyama Castle: About a 5-minute-walk from the hotel

Dōgo Onsen (hot spring): About a 15-minute tram ride

Saka no Ue no Kumo Museum (Featured in the novel Saka no Ue no Kumo by Shiba Ryotaro, which portrays the lives of three men from Matsuyama in the era of Japan's modernization from the late 19th to the beginning of the 20th century): About a 5-minute-walk from the hotel

Tobe Zoological Park of Ehime Prefecture: About 35 minutes by public transportation from the hotel



- 1) Iyotetsu Tram: About a 1-minute walk from Ōkaido station
- 2) Iyotetsu Tram: About 15 minutes from Matsuyama-ekimae station in front of JR Matsuyama Station to Ōkaido station
- 3) About a 30-minute drive from Matsuyama Airport to Ōkaido by limousine bus
- 4) About a 30-minute drive from Matsuyama Kankoko (ferry port) to Ōkaido by limousine bus
- 5) From Osaka: About a 4-hour drive (353 km) from Chugoku-Suita IC to Matsuyama IC
- 6) From Takamatsu: About a 1-hour-40-minute drive (151 km) from Takamatsu-Chūō IC to Matsuyama IC
- 7) From Tokushima: About a 2-hour-30-minute drive (183 km) from Tokushima IC to Matsuyama IC
- 8) From Fukuoka: About a 6-hour drive (467 km) from Fukuoka IC to Matsuyama IC

Hotel Parking

Fee: JPY1,200 / night (including tax) from 2:00 p.m. to 11:00 a.m. the following day

Operating hours: From 7:00 a.m. to 11:00 p.m.

Capacity: 40 vehicles

Vehicle restrictions: Maximum length 5,050 mm / maximum width 1,850 mm / maximum height 2,000 mm

* Available on arrival. We do not accept prior reservations.

* We will direct you to nearby parking or coin parking if the hotel parking lot is full, if the height of your car is over limitations or if your particular type of car is unsuitable.

* There will be no attendant at the hotel parking lot from 11:00 p.m. to 7:00 a.m. the following day. Please contact the front desk.

* Contact us for further information.

Daiwa Roynet Hotel MATSUYAMA

2-6-5, Ichiban-cho, Matsuyama-shi, Ehime 790-0001

Phone 089-913-1355 Fax 089-913-1356

<https://www.daiwaroynet.jp/matsuyama>

Check in 14:00 / Check out 11:00