

Daiwa Roynet Hotel MITO

A hotel complex
with commercial facilities —
An ideal base for business or sightseeing
in Mito and Hitachi.

Excellent access to the South Exit of JR Mito Station,
with a pedestrian walkway offering a direct connection.
Inside the building, there are a variety of facilities
including a movie theater and convenience store.
Daiwa Roynet Hotel MITO promises to make your stay
a relaxed and luxurious one,
whether it is for business or leisure.



ダイワロイネットホテル水戸



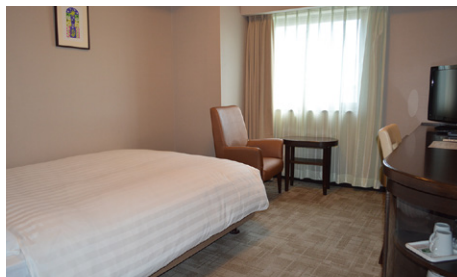
Standard Double Room (18.2m²)



Twin Room (27.3m²)



Superior Double Room (21.5m²)



Moderate Double Room (21.5m²)



Deluxe Double Room (26.7m²)



Universal Room (35.8m²)

(215 rooms in total)

Facilities and amenities

Free high-speed Internet (Wi-Fi) / VPN connectivity (all guest rooms have LAN cables)

Duvet / Liquid crystal display television set / Energy-saving system / Refrigerator (empty) / Air purifier with humidifier / Trouser press / Hair dryer / Bidet-style toilet seat / Charger for mobile devices / Electric kettle / Free satellite channels / VOD (Video on demand) / Hair shampoo / Hair rinse / Body soap / Face and hand soap / Fabric deodorizer / Toothbrush and toothpaste / Razor / Hair brush / Cotton buds / Shoehorn / Shoe polisher / Hangers / Bath towel / Face towel / Body wash towel / Bath mat / Nightwear / Slippers

Amenities for kids (available at the front desk)

Facilities and services

Rental computer (JPY880 per night, including tax) / Copy and fax services (subject to fees) / Public computer (available in the lobby) / Parcel delivery service / Microwave / Vending machine / Laundromat / Ice / Auto adjustment machine / AED / Evacuation chair / Wheelchair

Restaurants and stores

UNITED CINEMAS Mito (3F, COMBOX310)

Hana-no-mai (1F, COMBOX310)

Breakfast

Hana-no-mai (1F, COMBOX310)

In a relaxed and cozy Japanese-inspired space, guests can enjoy a buffet of izakaya-style Japanese dishes.

6:30 a.m. to 10:00 a.m. (Please enter by 9:45 a.m.)
Adults (13 years and older): JPY1,650 (including tax) /
Children (from 6 years old to 12 years old): JPY550 (including tax) /
Under school age infants (5 years old and younger): Free
Breakfast vouchers are available at the front desk.



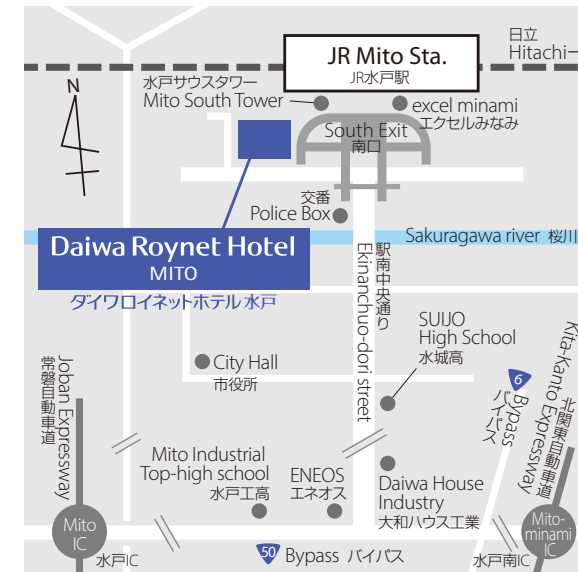
Local area guide (access from the hotel)

Kairakuen Park: About 15 minutes by public transportation

Aqua World Ibaraki Prefectural Oarai Aquarium: About a 30-minute drive from the hotel

Hitachi Seaside Park: About a 30-minute drive from the hotel

Fukuroda Falls: About a 90-minute drive from the hotel



- 1) About a 1-minute walk from the South Exit of JR Mito Station (direct access)
- 2) About a 15-minute drive from Mito-minami IC on the Kita-Kanto Expressway
- 3) About a 20-minute drive from Mito IC on the Joban Expressway
- 4) About 40 minutes from Ibaraki Airport to the South Exit of JR Mito Station by Limousine Bus

Affiliated parking (COMBOX310 One Park)

Fee: JPY600 per night per car

Vehicle restrictions: Maximum height – 2,100mm; maximum width – 1,900mm; maximum length – 5,000mm

* The parking lot is located in the rear of the hotel.

* There is another parking lot, Mito South Tower One Park, which is not affiliated.

* Please make sure to enter the COMBOX 310 One Park and take your parking ticket to the front desk.

Daiwa Roynet Hotel MITO

1-7-44 Miyamachi, Mito-shi, Ibaraki 310-0015

Phone 029-303-3311 Fax 029-303-3312

<https://www.daiwaroynet.jp/mito>

Check in 14:00 / Check out 11:00