

Daiwa Roynet Hotel

MORIOKA-EKIMAE

Morioka, a city where history and culture are still alive, now has a functional hotel where guests can truly relax.

The hotel is located by the Kaiunbashi Bridge, about a 3-minute walk from JR Morioka Station.

You can also get there by bus from

Iwate Hanamaki Airport in about 45 minutes.

The location is perfect for a leisurely stroll through downtown streets lined with rare western-style buildings from the Meiji period (1868-1912) and also offers ideal access to various destinations in the Tohoku district via rail services.

We look forward to welcoming you with our great variety of guest rooms.

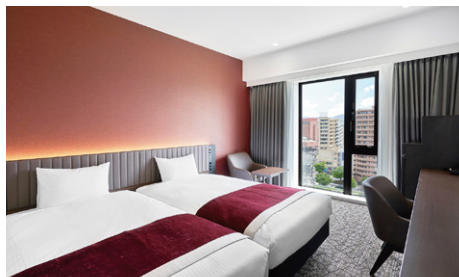


ダイワロイネットホテル盛岡駅前

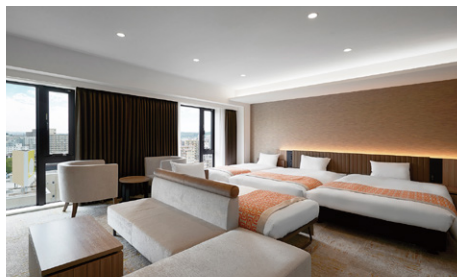




Moderate Double Room (21.0m²)



Moderate Twin Room (25.9m²)



Fourth Room (53.79m²)



Junior Suite (53.0m²)

All guest rooms except universal rooms have separate bathroom and toilet. (With a bathtub and a rain shower.)
You can enjoy a relaxing bath even when multiple guests are using the room.



Separate toilet and bathroom (example)

We also have superior twin rooms (27.13m²), Hollywood twin rooms (24.0m²), deluxe king rooms (27.13m²), and universal rooms (25.92m²).
(241 rooms in total)

Facilities and amenities

Free high-speed Internet (Wi-Fi)

Duvet / Smart TV / Energy-saving system / Refrigerator (empty) / Air purifier with humidifier / Safe / Trouser press / Hair dryer / Bidet-style toilet seat / Charger for mobile devices / Electric kettle / Free satellite channels / VOD (JPY1,000 per night, including tax) / Hair shampoo / Hair rinse / Body soap / Face and hand soap / Fabric deodorizer / Toothbrush and toothpaste / Razor / Hair brush / Cotton buds / Shoehorn / Shoe polisher / Hangers / Bath towel / Face towel / Body wash towel / Bath mat / Nightwear / Slippers

Amenities for kids (available at the front desk)

Facilities and services

Copy and fax services (subject to fees)

Parcel delivery service / Microwave / Vending machine / Laundromat / Ice / Auto adjustment machine / AED / Evacuation chair / Wheelchair

Meeting room (2F: 120m²)

Our meeting room can be used for a variety of purposes. It has ample facilities and services such as basic furnishing, Internet connectivity, and rental fixtures. It is suitable for conferences, training, job interviews, or presentations.



Available 24 hours.

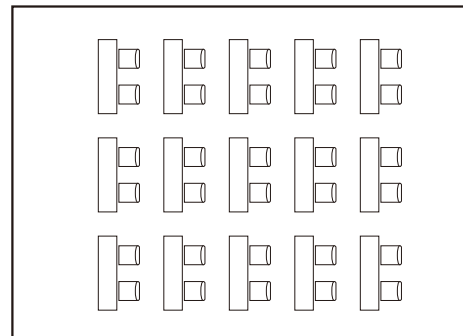
Price (including tax)

First three hours	JPY11,000
Four to six hours	JPY22,000
Seven to nine hours	JPY33,000
Ten to twelve hours	JPY66,000
Over 12 hours	JPY3,000 will be added per one hour.

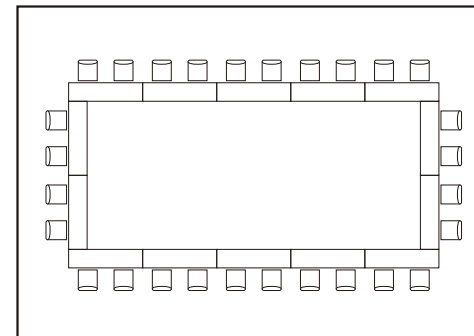
Capacity

Classroom	Hollow Square	U-Shaped	Cabaret
30 people	28 people	24 people	24 people

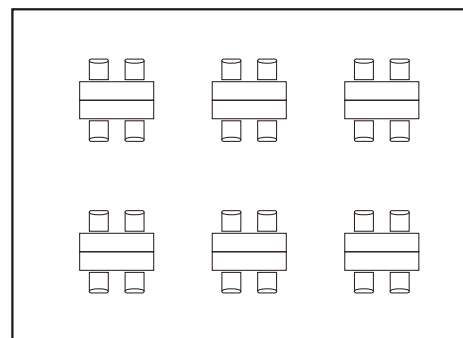
Room layout example



Classroom (30 people)



Hollow Square (28 people)



Cabaret (24 people)

Rental fixtures (including tax)

Projector	Free	Internet connection (Wi-Fi)	Free
Laser pointer	Free	Whiteboard	Free
Extension cord	Free	Microphone (one unit) and stand	Free

* Contact us for detailed information about each fixture.

* Fully equipped with wired and wireless LAN

* Please contact us for more information on availability, catering, and so on.

Cancellation charge

Previous day	Same day	No use without notice
20%	80%	100%

Restaurants and stores

SevenEleven (1F): Open 24 hours

Restaurant Tohoku Brasserie TREGION RELIER (2F): Breakfast: 6:30 a.m. to 10:00 a.m. /

Lunch: 11:00 a.m. to 3:00 p.m. / Dinner: 5:00 p.m. to 11:00 p.m.



Breakfast (2F: Tohoku Brasserie TREGION RELIER)

The Salad & Fruit bar has fresh produce delivered from various locations in the Tohoku district, as well as different varieties of Iwate-grown rice each week, served just cooked and piping hot with "gohan no otomo," toppings from various prefectures.

The dishes are prepared with an abundance of ingredients from six prefectures in the Tohoku district.

Breakfast is full of the delights of Tohoku, making locals feel at home and charming those who are encountering it for the first time.

6:30 a.m. to 10:00 a.m. (please enter by 9:30 a.m.)

Adults (13 years and older): JPY1,800 (including tax) /

Children (from 4 to 12 years old): JPY900 (including tax) / Infants (under 3 years old): Free

Vouchers are sold at the front desk.

Local area guide (access from the hotel)

MALIOS: About an 8-minute walk

Iwate Prefecture Citizen's Cultural Exchange Center Aiina: About a 10-minute walk

Tosai Classic Hall Iwate (Iwate Prefectural Hall): About a 22-minute walk

Morioka Castle Ruins Park (Iwate Koen): About a 15-minute walk

Bank of Iwate Red Brick Building: About a 20-minute walk

Koiwai Farm: About 40 minutes by car or bus



- 1) About a 3-minute walk from JR Morioka Station
- 2) About a 12-minute drive from the Morioka IC on the Tohoku Expressway via Prefectural Route 1
- 3) About a 13-minute drive from the Morioka-minami IC on the Tohoku Expressway via Prefectural Route 46

Multi-story car parking within the hotel premises (Brain Trust)

Fee: JPY1,100 per night per car (including tax, from 2:00 p.m. to 11:00 a.m. on the following day)

Operating hours: 7:00 a.m. to 11:00 p.m. (you cannot enter outside operation hours)

Capacity: 60 cars (28 standard cars and 32 high-roof cars)

Vehicle restriction: Standard cars: Maximum height: 2,000 mm / maximum width: 1,900 mm / maximum length: 5,000 mm / maximum weight: 2,000 t

* Available on arrival. We do not accept prior reservations.

* We will direct you to nearby parking if the parking lot is full, if the height or weight of your car is over limitations, or if your particular type of car is unsuitable.

Daiwa Roynet Hotel MORIOKA-EKIMAE

7-15 Morioka Ekimae-dori, Morioka-shi, Iwate 020-0034

Phone 019-621-8555 Fax 019-621-8556

<https://www.daiwaroynet.jp/morioka-ekimae>

Check in 14:00 / Check out 11:00