

Daiwa Roynet Hotel MORIOKA

A relaxed, functional hotel —
A place where you will feel completely
at home. An ideal base for business
or sightseeing in Morioka.

Within a one-hour trip of Hanamaki-Onsen, Koiwai Farm,
and Hiraizumi, a World Heritage site.
Morioka is a leading commercial city in the northern part of
the Tohoku District as well as the site of a historic castle.
Located in the center of the city among many prefectural
government buildings and public facilities,
Daiwa Roynet Hotel Morioka would like to serve as your base
in Morioka, whether your trip is for sightseeing or business.



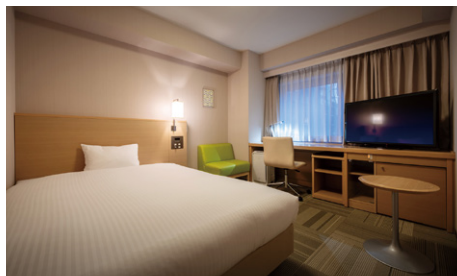
ダイワロイネットホテル盛岡



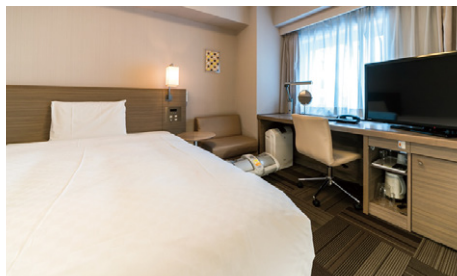
Standard Single Room (18m²)



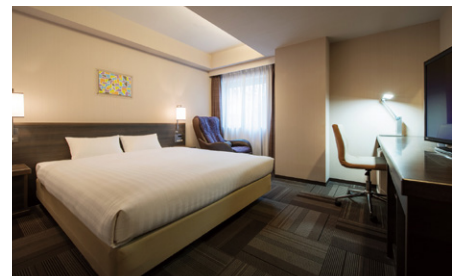
Twin Room (31m²)



Ladies Room (20m²)



Relax Room (20m²)



Deluxe Double Room (26m²)



Business Room (18m²)

We also have standard double rooms (18m²) and universal rooms (31m²).

(196 rooms in total)

Facilities and amenities

Free high-speed Internet (Wi-Fi) / VPN connectivity (all guest rooms have LAN cables)

Duvet / Liquid crystal display television set / Energy-saving system / Refrigerator (empty) / Air purifier with humidifier / Trouser press / Hair dryer / Bidet-style toilet seat / Charger for mobile devices / Electric kettle / Free satellite channels / VOD (Video on demand) / Hair shampoo / Hair rinse / Body soap / Face and hand soap / Fabric deodorizer / Toothbrush and toothpaste / Razor / Hair brush / Cotton buds / Shoehorn / Shoe polisher / Hangers / Bath towel / Face towel / Body wash towel / Bath mat / Nightwear / Slippers

Amenities for kids (available at the front desk)

Facilities and services

Rental computer (JPY880 per night, including tax) / Copy and fax services (subject to fees) / Public computer (available in the lobby) / Parcel delivery service / Microwave / Vending machine / Laundromat / Ice / Auto adjustment machine / AED / Evacuation chair / Wheelchair



Breakfast (MORIMARU, 1F)

Begin a wonderful day at MORIMARU...

We offer a lot of Iwate specialties, focusing on local produce for local consumption. Hittsumi, a local Iwate dish, and the chance to compare the taste of three major types of Morioka noodles have drawn favorable comments. We also offer popular dishes such as Iwaizumi Yogurt.

Please enjoy a delicious Iwate-style breakfast.

* Please note that some products may not be from Iwate, either because of the season or the delivery situation.

6:30 a.m. to 10:00 a.m. (please enter by 9:30 a.m.)

Adults (13 years old and older): JPY1,700 (including tax)/

Children (from 6 years old to 12 years old): JPY700 (including tax) / Infants (5 years old and younger): Free

Vouchers are sold at the front desk.

Local area guide (access from the hotel)

Ishiwarizakura (The rock-splitting cherry tree): About a 5-minute walk from the hotel

Koiwai Farm: About a 40-minute drive from the hotel

World Heritage site Hiraizumi: About a 120-minute drive from the hotel

Hachimantai Plateau: About a 60-minute drive from the hotel

Ryusendo Cave: About a 150-minute drive from the hotel

Morioka Sansa Odori Festival (a parade of taiko drummers and dancers, August 1st through 4th): About a 2-minute walk to the main venue, Chuo-dori, from the hotel



- 1) Bus: about a 10-minute ride from JR Morioka Station on the bus bound for Morioka Bus Center. Get off at the Chuo-dori-chome bus stop, then about a 2-minute walk
- 2) About a 15-minute walk from the east exit of JR Morioka Station
- 3) About an 8-minute drive from JR Morioka Station
- 4) About a 20-minute drive from Morioka IC
- 5) From Iwate Hanamaki Airport: about a 45-minute ride by bus to JR Morioka Station

Hotel parking

Fee: JPY1,100 per night (2:00 p.m. to 11:00 a.m. the following day) per car (including tax)

Operating hours: 7:00 a.m. to 11:00 p.m. (unloading is available for 24 hours)

Capacity: 7 cars (including one space exclusively for physically handicapped persons)

* Available on arrival. We do not accept prior reservations.

* We will direct you to nearby parking if the hotel parking lot is full.

* Please contact us for more information.

Daiwa Roynet Hotel MORIOKA

1-8-10, Odori, Morioka-shi, Iwate 020-0022

Phone 019-604-2155 Fax 019-604-2156

<https://www.daiwaroynet.jp/morioka>