

# Daiwa Roynet Hotel NAGOYA-EKIMAE

A relaxed, functional hotel —  
A place where you will feel completely  
at home. An ideal base for business  
or sightseeing in Nagoya.

About a 5-minute walk from Sakura-dori exit of JR Nagoya  
Station, the largest terminal station in the Chubu Region.

Very close to the Meitetsu Line, Kintetsu Line,  
JR Highway-Bus Terminal, and Nagoya Station Bus Terminal.

Good access to Sakae area (shopping district),  
Midland Square and Nagoya Castle.

Daiwa Roynet Hotel NAGOYA-EKIMAE, located in the center of  
the city, would like to serve as your base in Nagoya,  
whether your trip is for sightseeing or business.



ダイワロイネットホテル名古屋駅前





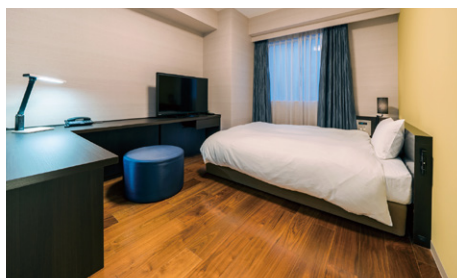
**Standard Single Room** (18m<sup>2</sup>)



**Standard Twin Room** (25m<sup>2</sup>)



**Executive Single Room** (18m<sup>2</sup>)



**Relax Room** (20m<sup>2</sup>)



**Executive Corner Double Room** (23m<sup>2</sup>)



**Ladies Room** (20m<sup>2</sup>)

We also have Standard Corner Double rooms (23m<sup>2</sup>), Executive Twin rooms (25m<sup>2</sup>).

(188 rooms in total)

## Facilities and amenities

Free high-speed Internet (Wi-Fi) / VPN connectivity (all guest rooms have LAN cables)

Duvet / Liquid crystal display television set / Energy-saving system / Refrigerator (empty) / Air purifier with humidifier / Trouser press (limited guest rooms) / Hair dryer / Bidet-style toilet seat / Charger for mobile devices / Electric kettle / Free satellite channels / VOD (Video on demand) / Hair shampoo / Hair rinse / Body soap / Face and hand soap / Fabric deodorizer / Toothbrush and toothpaste / Razor / Hair comb / Cotton buds / Shoehorn / Shoe polisher / Clothes brush / Hangers / Bath towel / Face towel / Body wash towel / Bath mat / Nightwear / Washable slippers

Amenities for ladies (available at the front desk) / Amenities for kids (available at the front desk)

## Facilities and services

Rental computer (JPY880 per night, including tax) / Copy and fax services (subject to fees) / Public computer (available in the lobby) / Parcel delivery service / Microwave / Vending machine / Laundromat / Ice / Auto adjustment machine / AED / Evacuation chair / Wheelchair

## Restaurants and stores

Lawson Sasashima Minami store (1F) Open 24 hours

Moriva Coffee Meieki-Minami store (1F)

6:30 a.m. to 10:30 p.m. (weekdays) / 7:00 a.m. to 10:30 p.m. (Saturday, Sunday and holidays)

Nakau (1F) Opens 24 hours

## Breakfast

(1F: Moriva Coffee)

Moriva Coffee is designed to produce the atmosphere of a delicate "beechwood forest" and offers a comfortable breathing space in the city to enjoy a cup of coffee. It offers a one-plate breakfast that includes toast and salad accompanied by high-quality fair trade coffee.

6:30 a.m. to 11:00 a.m. (weekdays) / 7:00 a.m. to 11:00 a.m. (Saturday, Sunday and holidays)

There is a choice of three morning plates with a beverage.

Breakfast charge: Adult--JPY520 (including tax)

Breakfast vouchers are available at the front desk.



(1F: Nakau)

Nakau is one of the largest gyūdon (simmered beef topped on a bowl of steamed rice) chains in Japan.

The restaurant offers its specialty Japanese style gyūdon as well as grilled salmon fillet and tonjiru (miso soup with pork and vegetables). This Japanese-style breakfast will give you energy for the day ahead.

5:00 a.m. to 10:00 a.m.

Breakfast charge: Adult--JPY520 (including tax)

There is a choice of four fixed menus of Japanese dishes.

Breakfast vouchers are available at the front desk.



## Local area guide (access from the hotel)

**Nagoya Castle:** About 20 minutes by public transportation

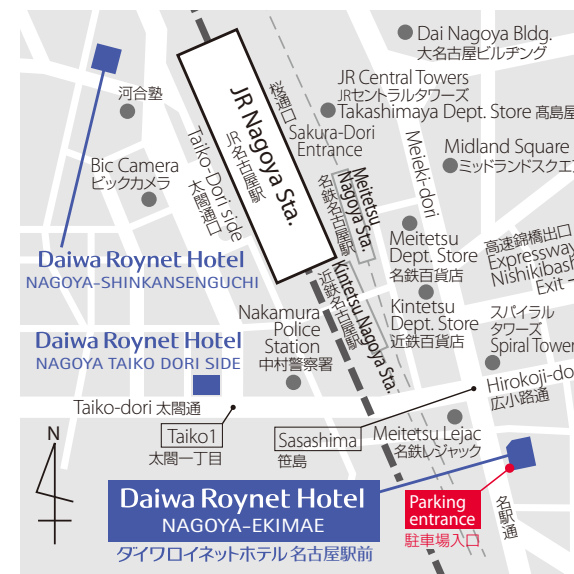
**Atsuta Jingu:** About 15 minutes by public transportation

**Port of Nagoya Public Aquarium:** About 40 minutes by public transportation

**Nagoya City Science Museum:** About 30 minutes by public transportation

**SCMAGLEV and Railway Park:** About 40 minutes by public transportation

**Higashiyama Zoo & Botanical Gardens:** About 25 minutes by public transportation



- 1) About a 5-minute walk from Sakura-dori exit of JR Nagoya Station
- 2) About a 3-minute walk from Meitetsu Nagoya Station and Kintetsu Nagoya Station
- 3) About a 1-minute walk from S6 exit of Meieki Chikagai (underground shopping mall) Sun Road
- 4) About a 4-minute walk from Meitetsu Bus Center
- 5) About 30 minutes from Central Japan International Airport Centrair by Meitetsu Airport Express to Meitetsu Nagoya Station
- 6) About 25 minutes from Nagoya (Komaki) Airport by Aoi Kotsu Bus to Nagoya Station
- 7) Tomei Expressway (from Tokyo and Shizuoka): Nagoya IC → Higashi-Meihan Expressway → Kamiyashiro JCT → Nagoya Expressway → About 5 minutes from Nishikibashi Exit
- 8) Meishin Expressway and Chuo Expressway (from Osaka and Nagano): Ichinomiya IC → Nagoya Expressway → About 5 minutes from Meidocho Exit
- 9) Higashi-Meihan Expressway (from Nara and Mie): Nagoya West JCT → Nagoya Expressway → About 5 minutes from Nishikibashi Exit

Hotel parking (multilevel car parking facility)

Open from 7:00 a.m. to 11:00 p.m. (You cannot bring vehicles in or out outside of these hours.)

Capacity: 32 cars (No vans, recreational vehicles or high-roof cars.)

Vehicle restriction: Maximum height: 1,550 mm; maximum length: 5000 mm; maximum width: 1,950 mm / Minimum ground clearance: 150 mm / Maximum weight: 1.7 t

Fee: JPY1,500 per night per car (2:00 p.m. to 11:00 a.m. the following day, including tax)

\* Please ask the hotel for further information.

\* Available on arrival. We do not accept prior reservations.

\* If you wish to move your car after parking it, please let the parking attendant know in advance. You cannot bring your car in or out outside operating hours (from 11:00 p.m. to 7:00 a.m. the following morning).

\* We will direct you to nearby parking if the parking lot is full, if the height or weight of your car is over limitations, or if your particular type of car is unsuitable.

## Daiwa Roynet Hotel NAGOYA-EKIMAE

1-23-20 Meieki Minami, Nakamura-ku, Nagoya-shi, Aichi 450-0003

Phone 052-541-3955 Fax 052-541-3956

<https://www.daiwaroynet.jp/nagoyaeikimae>

Check in 14:00 / Check out 11:00