

# Daiwa Roynet Hotel SAPPORO-NAKAJIMA KOEN

A functional hotel  
in an attractive location –  
We promise you a relaxed hotel stay.

Daiwa Roynet Hotel Sapporo-Nakajima koen,  
located just on the side of Nakajima koen,  
will give you a sense of both history and nature.  
What's more, it's within walking distance of Susukino.

Offering big baths and long-stay rooms,  
we look forward to being your base both for business  
and sightseeing in Sapporo.

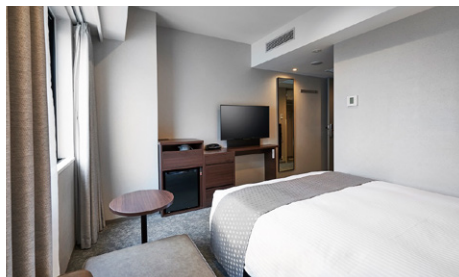


ダイワロイネットホテル札幌中島公園

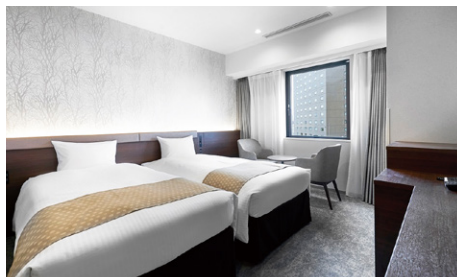




**Superior Double Room** (33.6m<sup>2</sup>)



**Standard Double Room** (18.0m<sup>2</sup>)



**Standard Twin Room** (25.2m<sup>2</sup>)

## Facilities and amenities

Wi-Fi enabled (wireless LAN)

Duvet / Liquid crystal display television set / Energy-saving system / Refrigerator (empty) / Air purifier with humidifier / Safe / Trouser press / Hair dryer / Bidet-style toilet seat / Charger for mobile devices / Electric kettle / Free satellite channels / VOD (Video on demand) / Hair shampoo / Hair rinse / Body soap / Face and hand soap / Fabric deodorizer / Toothbrush and toothpaste / Razor / Hair brush / Cotton buds / Shoehorn / Shoe polisher / Hangers / Bath towel / Face towel / Body sponge / Bath mat / Nightwear (pajamas) / Slippers

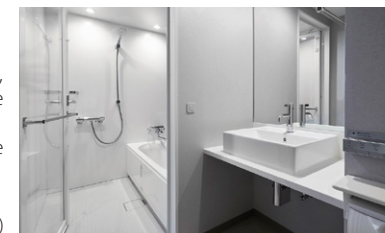
Amenities for kids (available at the front desk)



**Fourth Room** (56.4m<sup>2</sup>)

All guest rooms except standard double rooms, business double rooms, and universal rooms have separate bathroom and toilet or semi-separate type. You can enjoy a relaxing bath even when multiple guests are using the room.

Separate toilet and bathroom (example)



We also have moderate double rooms (24.5m<sup>2</sup>), deluxe twin rooms (33.6m<sup>2</sup>), universal rooms (25.9m<sup>2</sup>), and long stay rooms (56.4m<sup>2</sup>).  
(210 rooms in total)

## Facilities and services

Copy and fax services (subject to fees)  
Parcel delivery service / Microwave / Vending machine / Ice / Laundromat / Auto adjustment machine / AED / Wheelchair

### Large communal bath (2F)

Open from 3:00 p.m. to 12:00 a.m. and  
from 6:00 a.m. to 10:00 a.m.

A special bathtub will refresh you after a tiring day.  
After your bath, feel free to enjoy ice candies.



## Restaurant

Dish (1F)



## Breakfast (1F: Dish)

Please enjoy our extensive buffet of Japanese and Western dishes together with local Hokkaido seasonal specialties, all of which are healthy and homemade.

6:30 a.m. to 10:00 a.m. (please enter by 9:30 a.m.)

Adults (13 years and older): JPY1,500 (including tax) /

Children (from 6 years old to 12 years old): JPY1,000 (including tax) / Infants (5 years and younger): free

Vouchers are available at the front desk.

## Local area guide (access from the hotel)

**Nakajima Koen (park)** : About a 4-minute walk

**Clock Tower** : About 15 minutes by public transportation

**Former Hokkaido Government Office Building (Red Brick Office)** : About 15 minutes by public transportation

**Nijo Ichiba (market)** : About a 20-minute walk

**Susukino District** : About a 10-minute walk



- 1) About a 4-minute walk from Entrance 1 of Nakajima-koen station on the Namboku Subway Line
- 2) About 80 minutes from New Chitose Airport by shuttle bus to Nakajima Koen stop, then a 5-minute walk from the bus stop
- 3) About a 25-minute drive from the Kitago IC on the Hokkaido Expressway

Associated parking within the hotel premises

Fee: JPY1,500 per night per car (2:00 p.m. to 11:00 a.m. the following day, including tax)

Operating hours: 7:00 a.m. to 11:00 p.m.

Capacity: 34 cars

Vehicle restriction: Maximum length: 5,300 mm / maximum width: 2,050 mm / maximum height: 2,000 mm / maximum weight: 2.50 t / minimum ground clearance: 110 mm

\* You cannot move your car outside operating hours.

\* Available on arrival. We do not accept prior reservations.

\* We will direct you to nearby parking if the parking lot is full, if the height or weight of your car is over limitations, or if your particular type of car is unsuitable. Please pay at the parking lot where you park your car.

## Daiwa Roynet Hotel SAPPORO-NAKAJIMA KOEN

1-1 Minami 9-jo Nishi 5-chome, Chuo-ku, Sapporo-shi, Hokkaido 064-0809

Phone 011-530-6755 Fax 011-530-6756

<https://www.daiwaroynet.jp/nakajima-koen>

Check in 14:00 / Check out 11:00