

# Daiwa Roynet Hotel

## NISHI-SHINJUKU PREMIER

Nestled among a cluster of skyscrapers including the Tokyo Metropolitan Government Building. An ideal base for business or sightseeing in Nishi-Shinjuku.

The hotel is within walking distance of the leafy Shinjuku Chuo Park, the 202-meter high TMG observatories, and by Shinjuku West Exit, there is Omoide Yokocho, which dates back to just after the end of World War II. This subcenter of the capital also has outstanding accessibility for various locations.

With comfortable guest rooms, ample facilities, and excellent services, Daiwa Roynet Hotel NISHI-SHINJUKU offers our guests relief from the stresses and strains of daily life.



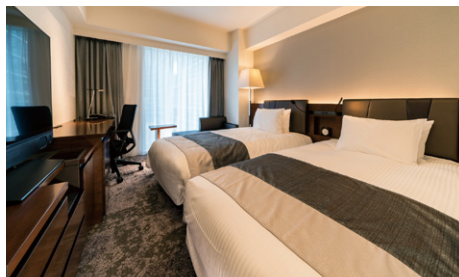
ダイワロイネットホテル西新宿 PREMIER



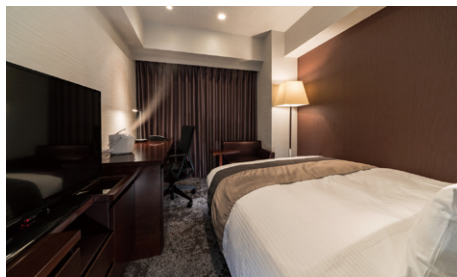




**Standard Double Room** (21m<sup>2</sup>)



**Standard Twin Room** (24m<sup>2</sup>)



**Ladies' Double Room** (21m<sup>2</sup>)

## Facilities and amenities

Free high-speed Internet (Wi-Fi)

Duvet / Liquid crystal display television set / Energy-saving system / Refrigerator (empty) / Air purifier with humidifier / Safe / Trouser press / Hair dryer / Bidet-style toilet seat / Charger for mobile devices / Electric kettle / Free satellite channels / VOD (Video on demand) / Hair shampoo / Hair rinse / Body soap / Face and hand soap / Fabric deodorizer / Toothbrush and toothpaste / Razor / Hair brush / Cotton buds / Shoehorn / Shoe polisher / Hangers / Bath towel / Face towel / Body wash towel / Bath mat / Nightwear / Slippers

Amenities for kids (available at the front desk)



**Junior Suite Room** (49m<sup>2</sup>)

All guest rooms have separate bathroom and toilet.  
You can enjoy a relaxing bath even when multiple guests are using the room.



Separate toilet and bathroom (example)

We also have deluxe double rooms (25m<sup>2</sup>), ladies' twin rooms (24m<sup>2</sup>), and family rooms (24m<sup>2</sup>).

(280 rooms in total)

## Facilities and services

Rental computer (JPY880 per night, including tax) / Copy and fax services (subject to fees) / Public computer (available in the lobby) / Parcel delivery service / Microwave / Vending machine / Laundromat / Ice / Auto adjustment machine / AED / Evacuation chair / Wheelchair

Meeting room (2F: 50m<sup>2</sup>)

Our meeting room can be used for a variety of purposes. It has ample facilities and services such as basic furnishing, Internet connectivity as well as rental fixtures. It is suitable for conferences, training, job interviews, or presentations.



Available from 9:00 a.m. to 9:00 p.m.

Price (including tax)

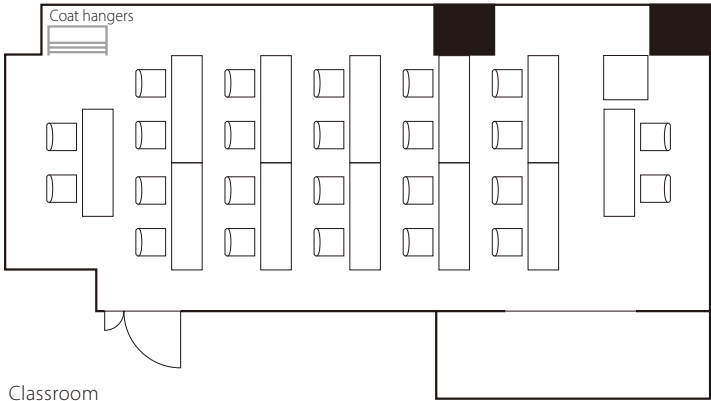
First two hours	JPY11,000
After one hour (per hour)	JPY5,500

\* Contact us for detailed information about the price.

Capacity

Classroom	24 people
-----------	-----------

Room layout example



Rental fixtures (including tax)

Projector	Free
Whiteboard	Free
Microphone (one unit) and stand	Free
Extension cord	Free
Wi-fi	Free

\* Contact us for detailed information about each fixture.  
\* Please contact us for more information on availability, catering, and so on.



## Restaurants and stores

Seven Eleven (B1): Open 24 hours

Cafe Terrace Roy (2F): 7:30 a.m. to 5:30 p.m.

Restaurant HEARTH (1F): 7:00 a.m. to 10:00 a.m.



### Breakfast (1F: HEARTH)

A buffet-style breakfast with Japanese and Western dishes. Our soft, fluffy pancakes are highly recommended.

7:00 a.m. to 10:00 a.m. (please enter by 9:30 a.m.)  
Adults (13 years and older): JPY1,980 (including tax) /  
Children (from 6 to 12 years old): JPY1,000 (including tax) /  
Infants (5 years and under) : Free (Please note this applies only for one infant per adult.)

Vouchers are sold at the front desk.



## Local area guide (access from the hotel)

**Tokyo Metropolitan Government Building:** About a 5-minute walk

**Shinjuku Gyoen National Garden:** About a 15-minute walk

**Meiji Jingu and Meiji Jingu Gaien:** About 20 minutes by public transportation

**Samurai Museum:** About a 20-minute walk

**Isetan Department Store:** About a 15-minute walk



- 1) About a 5-minute walk from Nishi-shinjuku Station on the subway Tokyo Metro Marunouchi Line.
- 2) About a 6-minute walk from Tochomae Station on the subway Toei Oedo Line.
- 3) About a 15-minute walk from JR Shinjuku Station
- 4) About 20 minutes from JR Tokyo Station via Shinjuku
- 5) About 40 minutes to West Exit of Shinjuku Station from Haneda Airport by Limousine Bus.
- 6) About 2 hours to West Exit of Shinjuku Station from Narita Airport by Limousine Bus.

Multistory car park in the hotel premises

Fee: JPY1,500 per night per car (2:00 p.m. to 11:00 a.m. the following day, including tax)

Capacity: 34 cars

Vehicle restriction: Maximum height: 2,100 mm (We do not accept buses.)

\* Available on arrival. We do not accept prior reservations.

\* We will direct you to nearby parking if the parking lot is full, if the height or weight of your car is over limitations, or if your particular type of car is unsuitable.

## Daiwa Roynet Hotel NISHI-SHINJUKU PREMIER

6-12-39 Nishi-Shinjuku, Shinjuku-ku, Tokyo 160-0023

Phone 03-5909-8480 Fax 03-5909-8481

<https://www.daiwaroynet.jp/nishi-shinjuku>

Check in 14:00 / Check out 11:00