

Daiwa Roynet Hotel OITA

A relaxed, functional hotel —
A place where you will feel completely
at home. An ideal base for business
or sightseeing in Oita.

About 60 minutes from Oita Airport,
also within a day-trip distance of Beppu and Yufuin—.
In ancient times, the city was called “Funai.”

Though Oita-shi keeps growing,
its history is preserved in its streetscape.
Daiwa Roynet Hotel Oita, on the north side of JR Oita Station,
would like to serve as your base in Oita,
whether your trip is for sightseeing or business.

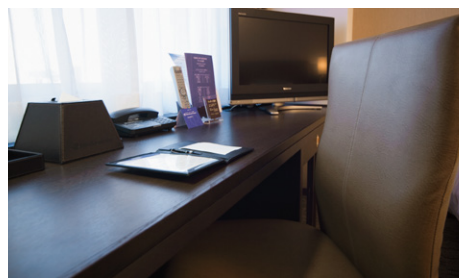


ダイワロイネットホテル大分

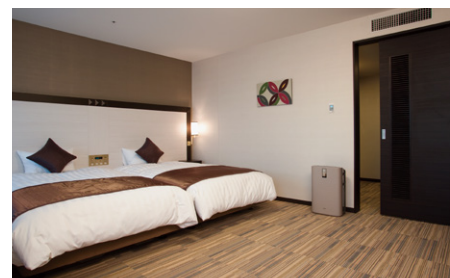




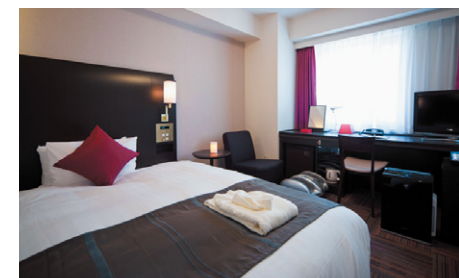
Standard Single Room / Standard Double Room (18.2m²)



Standard Twin Room (36.1m²)



Hollywood Twin Room (33.6m²)



Ladies Room (20.2m²)

We also have universal rooms (36.1m²).

(Total 240 rooms)

Facilities and amenities

Wireless LAN (Wi-Fi standard) / VPN connectivity (all guest rooms have LAN cables)

Duvet / Liquid crystal display television set / Energy-saving system / Refrigerator (empty) / Air purifier with humidifier / Trouser press / Hair dryer / Bidet-style toilet seat / Charger for mobile devices / Electric kettle / Free satellite channels / VOD (Video on demand) / Hair shampoo / Hair rinse / Body soap / Face and hand soap / Fabric deodorizer / Shoehorn / Shoe polisher / Hangers / Bath towel / Face towel / Bath mat / Nightwear / Slippers

Please pick up tooth brush sets, hair brushes, razors, cotton swabs, body towels and others at the amenity bar on the front desk floor.

Amenities for kids (available at the front desk)

Facilities and services

Rental computer (JPY880 per night, including tax) / Copy and fax services (subject to fees) / Public computer (available in the lobby) / Parcel delivery service / Microwave / Vending machine / Laundromat / Ice / Auto adjustment machine / AED / Evacuation chair / Wheelchair

Restaurants and stores

H COFFEE & WORK / Sakemeshi Stand Shokudo H (1F) Phone: 097-574-6687

Lawson (convenience store, 1F), open 24 hours



Breakfast (1F: H COFFEE & WORK / Sakemeshi Stand Shokudo H)

With daily dishes featuring local vegetables and Oita local cuisine, the buffet breakfast offers attractive offerings which will give you energy for the day ahead.

Relax and enjoy your breakfast in the morning light in a bright, spacious room.

A big-screen television allows you to catch up with information of the day as you enjoy breakfast.

6:30 a.m. to 10:00 a.m. (please enter by 9:30 a.m.)

Adults (13 years and older): JPY1,500 (including tax) /

Children (from 6 years old to 12 years old): JPY880 (including tax) /

Infants under school age (5 years and younger): Free

Breakfast vouchers are sold at the front desk.



Local area guide (access from the hotel)

Funaijo (Funai Castle Ruins in Oita-joshi Park): About a 5-minute walk from the hotel

Aquarium UMITAMAGO: About a 15-minute drive from the hotel

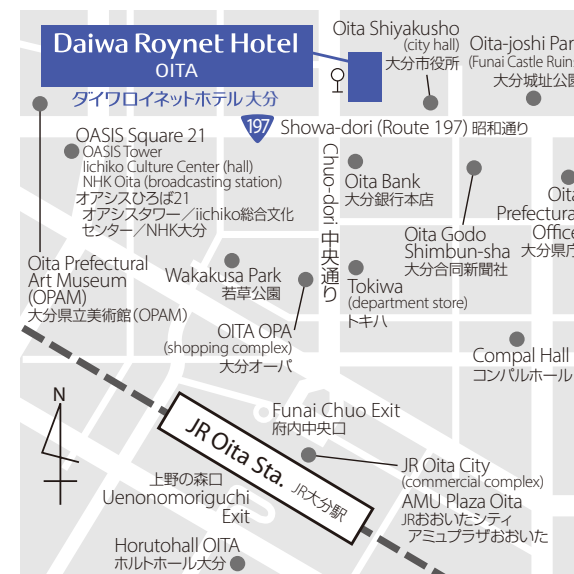
Takasakiyama Natural Zoological Garden: About a 15-minute drive from the hotel

Kyushu Natural Zoological Park "African Safari": About a 50-minute drive from the hotel

Sanrio Character Park Harmonyland: About a 50-minute drive from the hotel

Yufuin (a city with a famous onsen resort): About a 60-minute drive from the hotel

Beppu Onsen (a city with famous onsen resort): About a 20-minute drive from the hotel



- 1) About a 10-minute walk from the Funai central exit (north exit) of JR Oita Station
- 2) About a 60-minute drive by Oita Airport Express Bus "Airliner" from Oita Airport to the Niagecho Daiwa Roynet Hotel-mae stop, about 15-minute walk to the hotel entrance
- 3) About 10-minute drive from Oita IC

Hotel parking (multi-story parking lot)

Fee: JPY800 per night per car (including tax)

Operating hours: 7:00 a.m. to 11:00 p.m. (unloading is available for 24 hours)

Capacity: 78 standard-sized cars, 18 high-roof cars

Vehicle restrictions: Maximum length 5,000 mm / maximum width 1,850 mm / maximum height 1,550 mm for standard-sized cars and 2,000 mm for high-roof cars; maximum weight 2t for standard-sized cars / 2.3t for high-roofed cars

* Available on arrival. We do not accept prior reservations.

* We will direct you to nearby parking if the hotel parking lot is full, the height or weight of your car are over the limitations or your particular type of car is unsuitable.

* Please contact us for more information.

Daiwa Roynet Hotel OITA

2-3, Niage-machi, Oita-shi, Oita 870-0046

Phone 097-535-0022 Fax 097-535-0023

<https://www.daiwaroynet.jp/oita/>

Check in 14:00 / Check out 11:00