

Daiwa Roynet Hotel OKINAWA-KENCHOMAE

A relaxed, functional hotel —
A place where you will feel completely
at home. An ideal base for business
or sightseeing in Okinawa.

The location of Daiwa Roynet Hotel OKINAWA-KENCHOMAE
is not only in the center of Naha City but also in the economic
and public administration center for the whole of Okinawa.

It is very convenient as more than 70 bus lines run from
the station and it is close to the bustling Kokusai-dori street.
Daiwa Roynet Hotel OKINAWA-KENCHOMAE would like to
serve as your base in Okinawa,
whether your trip is for sightseeing or business.



ダイワロイネットホテル沖縄県庁前

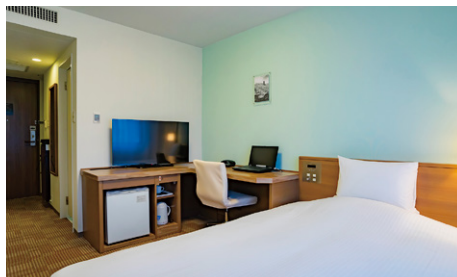




Standard Room (16.5~18m²) - Main building



Hollywood Twin Room (25.5m²) - Main building



Business Room (16.5m²) - Main building

Facilities and amenities

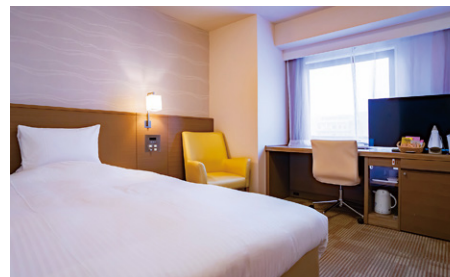
Free high-speed Internet (Wi-Fi)

Duvet / Liquid crystal display television set / Energy-saving system / Refrigerator (empty) / Air purifier with humidifier / Trouser press / Hair dryer / Bidet-style toilet seat / Charger for mobile devices / Electric kettle / Free satellite channels / VOD (Video on demand) / Hair shampoo / Hair rinse / Body soap / Face and hand soap / Fabric deodorizer / Toothbrush and toothpaste / Razor / Hair comb / Cotton buds / Shoehorn / Shoe polisher / Clothes brush / Hangers / Bath towel / Face towel / Body wash towel / Bath mat / Nightwear / Washable slippers

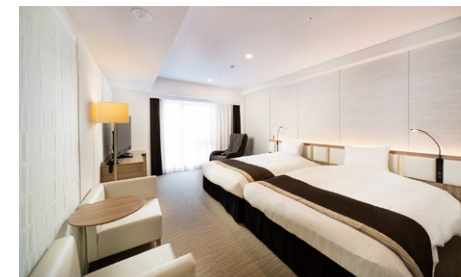
Amenities for ladies (available at the front desk) / Amenities for kids (available at the front desk)



Moderate Twin Room (25.5m²) - Annex



Ladies Room (19m²) - Main building



Deluxe Twin Room (24m²) - Annex

We also have standard twin rooms (25.5m²), deluxe double rooms (24.0m²), relax rooms (Japanese room, 19.0m²) and universal rooms (25.5m²) in the main building; concept twin rooms (25.5m²), superior twin rooms (27.2m² – 28.8m²) and universal rooms (25.5m²) in the annex.
(240 rooms in total)

Facilities and services

Rental computer (JPY880 per night, including tax) / Copy and fax services (subject to fees) / Public computer (available in the lobby) / Parcel delivery service / Microwave / Vending machine / Laundromat / Ice / Auto adjustment machine / AED / Evacuation chair / Wheelchair

Restaurant

Bal Co-Lab (1F)



Breakfast (1F: Bal Co-Lab)

Our buffet-style breakfast offers a wide variety of mainly Western and Japanese dishes.

Our spacious, relaxed restaurant welcomes guests with an extensive menu.

We look forward to serving you hearty and wholesome dishes that will prepare you both physically and mentally for the day ahead.

6:30 a.m. to 10:00 a.m. (please enter by 9:30 a.m.)

Adults (13 years and older): JPY1,300 (including tax) /

Children (from 6 years old to 12 years old): JPY650 (including tax) / Infants (5 years old and younger): Free

Breakfast vouchers are available at the reception.

The restaurant is also open for lunch and dinner. (Please order and pay directly at the restaurant.)



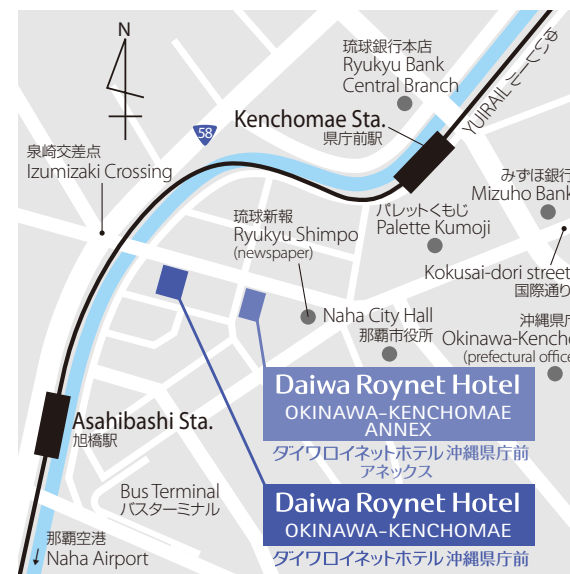
Local area guide (access from the hotel)

Kokusai-dori street: About a 5-minute walk

Shurijo Castle Park: About a 15-minute drive / about 30 minutes by public transportation

Okinawa Churaumi Aquarium: About a 2-hour drive

T Galleria by DFS, Okinawa: About a 10-minute drive



- 1) About a 3-minute walk from Asahibashi Station on YUIRAIL
- 2) About 10 minutes from Naha Airport Station to Asahibashi Station by YUIRAIL
- 3) About a 10-minute drive from Naha Airport

Hotel parking

Fee: JPY1,050 per night per car (including tax)

Capacity: 28 standard cars / 8 high-roof cars

Vehicle restrictions: Standard car maximum height – 1,550mm / High-roof car maximum height – 2,000mm

* Available on arrival. We do not accept prior reservations.

* We will direct you to nearby parking if the parking lot is full, if the height or weight of your car is over limitations, or if your particular type of car is unsuitable.

Daiwa Roynet Hotel OKINAWA-KENCHOMAE

1-11-2 Izumizaki, Naha-shi, Okinawa 900-0021

Annex : 1-10-21 Izumizaki, Naha-shi, Okinawa

Phone 098-860-1855 Fax 098-860-1856

<https://www.daiwaroynet.jp/okinawa-kenchomae>

Check in 14:00 / Check out 11:00