

Daiwa Roynet Hotel

SENDAI-NISHIGUCHI PREMIER

Sendai is known as the “City of Trees” and we have created the atmosphere of a wooded space in our hotel. We offer heartfelt service and sophisticated stylish guest rooms where you can totally relax.

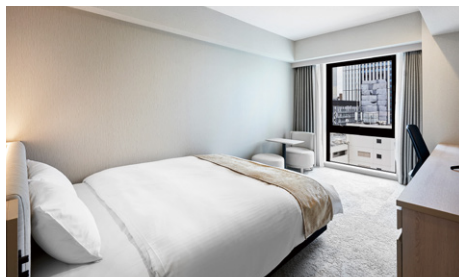
A highly convenient location about a 5-minute walk from the west exit of JR Sendai Station.

All guest rooms are larger than 21 m² and there are convenience stores and restaurants within the hotel building. We will make your stay feel relaxed and comfortable as you take the first step on your journey.

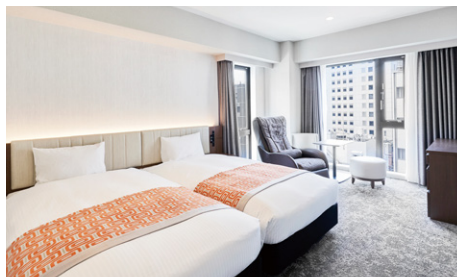




Junior Suite (44m²)



Moderate Double Room (21m²)



Relax Twin Room (30m²)

Facilities and amenities

Wireless LAN (Wi-Fi standard)

Duvet / Smart TV / Energy-saving system / Refrigerator (empty) / Air purifier with humidifier / Safe / Trouser press / Hair dryer / Bidet-style toilet seat / Charger for mobile devices / Electric kettle / Free satellite channels / VOD (JPY1,000 per night, including tax) / Hair shampoo / Hair rinse / Body soap / Face and hand soap / Fabric deodorizer / Toothbrush and toothpaste / Razor / Hair brush / Cotton buds / Shoehorn / Shoe polisher / Hangers / Bath towel / Face towel / Hand towel / Body wash towel / Bath mat / Nightwear / Slippers

Amenities for kids (available at the front desk)



Moderate Twin Room (29m²)

All guest rooms except universal rooms have separate bathroom and toilet. You can enjoy a relaxing bath even when multiple guests are using the room.



Separate toilet and bathroom (example)

We also have deluxe king rooms (29m²), junior suite family rooms (44m²), and universal rooms (28m²).
(183 rooms in total)

Facilities and services

Copy and fax services (subject to fees)

Parcel delivery service / Microwave / Vending machine / Laundromat / Ice / Auto adjustment machine / AED / Wheelchair

Meeting room (4F : A 68m² / B 48m²)

Our meeting room can be used for a variety of purposes. It has ample facilities and services such as basic furnishing, Internet connectivity, and rental fixtures. It is suitable for conferences, training, job interviews, or presentations.



Available 24 hours.

Price for A (including tax)

First one hour	JPY10,000
Extension charge	JPY10,000 per hour

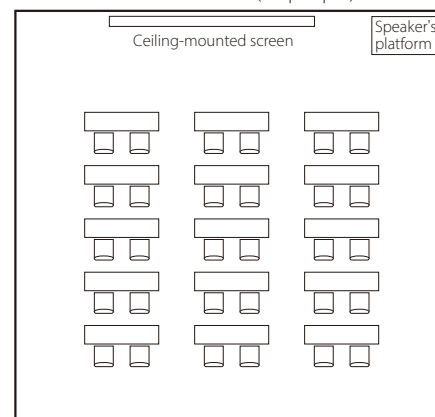
Price for B (including tax)

First one hour	JPY6,000
Extension charge	JPY6,000 per hour

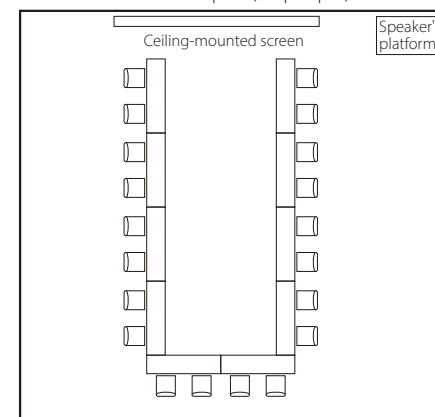


Room layout example

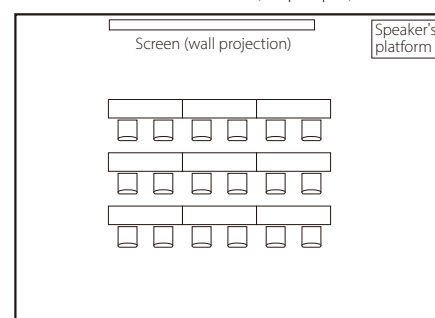
A: Classroom (30 people)



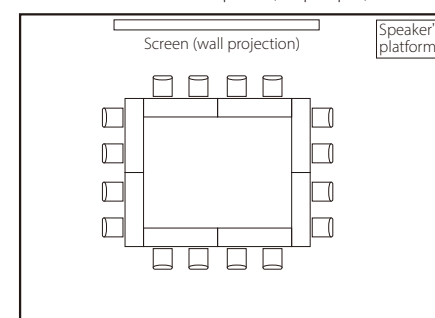
A: U-Shaped (20 people)



B: Classroom (18 people)



B: Hollow Square (16 people)



Rental fixtures (including tax)

Projector	Free	Whiteboard	Free
Extension cord	Free	Microphone (one unit) and stand	Free
Internet connection (Wi-Fi)	Free		

* Contact us for detailed information about each fixture.

* Fully equipped with wired and wireless LAN.

* Please contact us for more information on availability and so on.

Capacity

	Classroom	Hollow Square	U-Shaped	Cabaret
A	30 people	24 people	20 people	16 people
B	18 people	16 people	16 people	12 people

Cancellation charge

Previous day	Same day	No use without notice
20%	80%	100%

Restaurants and stores

Seven-Eleven (1F): Open 24 hours

Restaurant Sendai Bal MUSUBI (13F): Breakfast: 6:30 a.m. to 10:00 a.m. /

Lunch: 11:30 a.m. to 3:00 p.m. / Dinner: 5:00 p.m. to 11:00 p.m.



Breakfast (13F: Sendai Bal MUSUBI)

Get the day off to a good start in an airy, spacious restaurant on the top of the hotel.

Our breakfast buffet offers both Japanese and Western dishes, from a popular American-style full breakfast to dishes prepared with local products, fresh salad and many other ingredients.

We welcome families and groups of friends as well as solo guests.

6:30 a.m. to 10:00 a.m. (please enter by 9:30 a.m.)

Adults (13 years and older): JPY2,200 (including tax) /

Children (from 7 years old to 12 years old): JPY900 (including tax) /

Infants (6 years old and younger): Free

Vouchers are sold at the front desk.



Local area guide (access from the hotel)

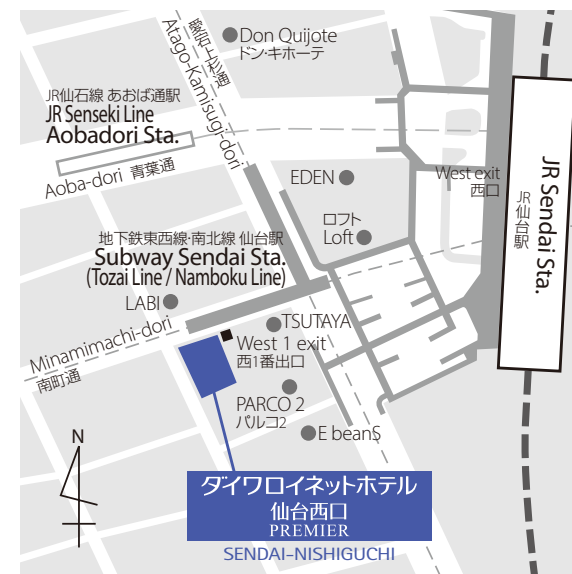
Sendai-asaichi (early-morning market): About a 1-minute walk

Rakuten Mobile Park Miyagi (Miyagi Prefectural Stadium): About a 30-minute walk

Zuihoden Temple: About an 8-minute drive / about a 30-minute walk

The Site of Sendai Castle (Aoba Castle): About a 15-minute drive / about a 45-minute walk

AER View Terrace: About an 8-minute walk



- 1) About a 5-minute walk from the west exit of JR Sendai Station via the pedestrian deck.
- 2) Adjoining the west 1 exit of Subway Sendai Station
- 3) About a 25-minute ride to Sendai Station from Sendai International Airport by Sendai Airport Access Line
- 4) About a 20-minute drive from Sendai-Miyagi IC on the Tohoku Expressway via Route 48

Hotel parking (D-parking)

Fee: JPY1,500 per night per car (including tax, from 2:00 p.m. to 12:00 p.m. the following day)

Capacity: 40 cars (20 standard cars and 20 high-roof cars)

Vehicle restriction: Standard cars: Maximum height: 2,000 mm / maximum width: 1,850 mm / maximum length: 5,000 mm / maximum weight: 2,000 t

* Available on arrival. We do not accept prior reservations.

* We will direct you to nearby parking if the parking lot is full, if the height or weight of your car is over limitations, or if your particular type of car is unsuitable.

* You cannot get in or out your car from 11:00 p.m. to 6:30 a.m. the following day)

* Please pay at the parking lot where you park your car.

Daiwa Roynet Hotel SENDAI-NISHIGUCHI PREMIER

3-7-25 Chuo, Aoba-ku, Sendai-shi, Miyagi 980-0021

Phone 022-217-7255 Fax 022-217-7256

<https://www.daiwaroynet.jp/sendai-nishiguchi/>

Check in 14:00 / Check out 11:00