

# Daiwa Roynet Hotel SENDAI

A relaxed, functional hotel —  
A place where you will feel completely  
at home. An ideal base for business  
or sightseeing in Sendai.

With some of the most picturesque spots in Japan  
including Matsushima and Akiu Onsen, Sendai,  
"The City of Trees," has prospered as a castle town  
since ancient times.

It is the home of a professional baseball team and  
continues to expand its business profile by attracting IT firms.  
Daiwa Roynet Hotel SENDAI would like to serve  
as your base in Sendai,  
whether your trip is for sightseeing or business.



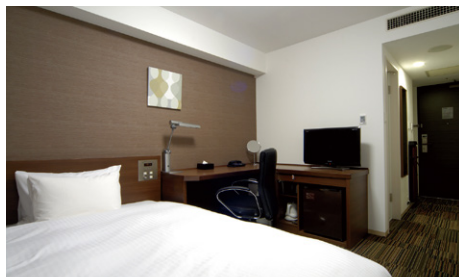
ダイワロイネットホテル仙台



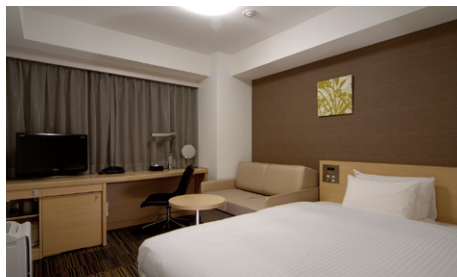




**Moderate Single Room** (18.2m<sup>2</sup>)



**Business Room** (18.2m<sup>2</sup>)



**Deluxe Single Room** (20.8m<sup>2</sup>)

## Facilities and amenities

Wireless LAN (Wi-Fi standard) / VPN connectivity (all guest rooms have LAN cables)

Duvet / Liquid crystal display television set / Energy-saving system / Refrigerator (empty) / Air purifier with humidifier / Trouser press / Hair dryer / Bidet-style toilet seat / Charger for mobile devices / Electric kettle / Free satellite channels / VOD (Video on demand) / Hair shampoo / Hair rinse / Body soap / Face and hand soap / Fabric deodorizer / Toothbrush and toothpaste / Razor / Hair brush / Cotton buds / Shoehorn / Shoe polisher / Hangers / Bath towel / Face towel / Body wash towel / Bath mat / Nightwear / Slippers

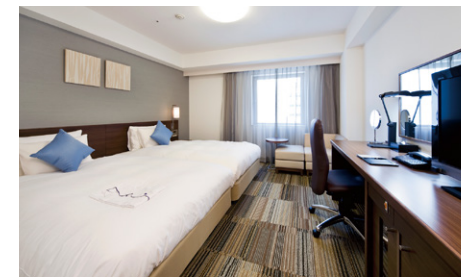
Amenities for kids (available at the front desk)



**Grand Deluxe Twin Room** (30.9m<sup>2</sup>)



**Moderate Double Room** (18.2m<sup>2</sup>)



**Deluxe Twin Room** (26.5m<sup>2</sup>)

We also have deluxe double rooms (20.8m<sup>2</sup>), standard twin rooms (20.8 to 21.5m<sup>2</sup>), and universal twin rooms (30.9m<sup>2</sup>).  
(270 rooms in total)

## Facilities and services

Rental computer (JPY880 per night, including tax) / Copy and fax services (subject to fees) / Public computer (available in the lobby) / Parcel delivery service / Microwave / Vending machine / Laundromat / Ice / Auto adjustment machine / AED / Evacuation chair / Wheelchair

## Meeting room (12F: 30.9m<sup>2</sup>)

We have a meeting room exclusively for our registered guests. It may not be used by anyone not staying at the hotel, and for that reason, we cannot allow it to be used for purposes such as interviews, health checkups, or exhibitions, which may include non-guests. It is suitable for meetings of a small group.



Available from 9:00 a.m. to 9:00 p.m.

### Price (including tax)

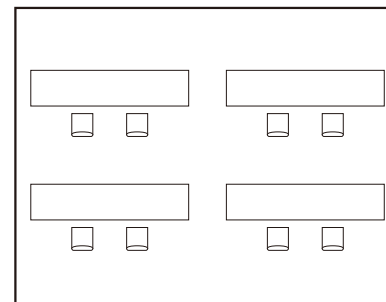
First two hours	JPY8,800
After two hours (per hour)	JPY4,400



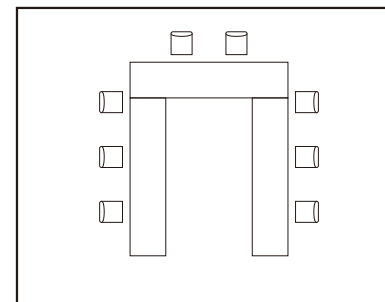
### Capacity

Classroom	Hollow Square	U-Shaped	Cabaret
8 people	8 people	8 people	10 people

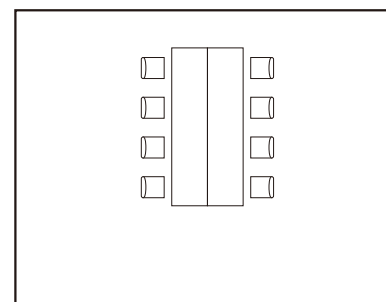
### Room layout example



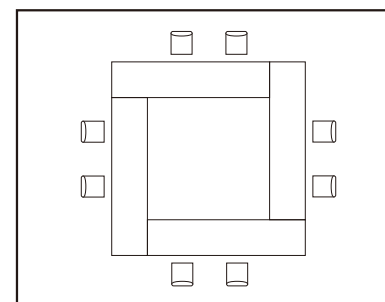
Classroom (8 people)



U-Shaped (8 people)



Cabaret (8 people)



Hollow Square (8 people)

### Rental fixtures (including tax)

Rental computer (limited units)	JPY800 per unit
Internet connection	Free
Whiteboard	Free

\* Contact us for detailed information about each fixture.

\* Fully equipped with wired and wireless LAN

\* Please contact us for more information on availability, catering and so on.

### Cancellation charge:

Previous day	Same day	No use without notice
20%	80%	100%



## Restaurants and stores

Seven-Eleven (1F) Open 24 hours

Oxtongue Barbecue Store-Tsukasa (1F): Open from 11:30 a.m. to 2:00 p.m., 5:00 p.m. to 11:00 p.m. / Holiday: Wednesday

Bistro & Bar SK7 (sakana) (1F): Open from 11:30 a.m. to 3:00 p.m. (weekday),

5:00 p.m. to 11:30 p.m. / 11:30 a.m. to 11:30 p.m. (Saturday) / 11:30 a.m. to 11:00 p.m. (Sunday and holiday)

Hama no Ryoshi Izakaya "Kochira Marutoku Gyogyōbu" (2F):

Open from 6:30 a.m. to 9:30 a.m., 11:30 a.m. to 2:30 p.m., 5:00 p.m. to 12:00 a.m. (weekdays) / 7:00 a.m. to 10:30 a.m., 11:30 a.m. to 2:30 p.m., 5:00 p.m. to 12:00 a.m. (Saturday, Sunday and holiday)



## Breakfast (2F: "Kochira Marutoku Gyogyōbu")

You can choose either Japanese or Western food and you can decide how much you would like to eat ♪

We offer buffet-style breakfast. Please enjoy Sendai specialties and fresh sashimi for your breakfast.

Weekday – 6:30 a.m. to 9:30 a.m. (Please enter by 9:15 a.m.)

Saturday, Sunday and holiday – 7:00 a.m. to 10:30 a.m. (Please enter by 10:15 a.m.)

Adults (13 years and older): JPY 1,300 (including tax) /

Children (from 6 years old to 12 years old): JPY700 (including tax) /

Infants (5 years old and younger): Free

Breakfast vouchers are sold at the front desk.

## Local area guide (access from the hotel)

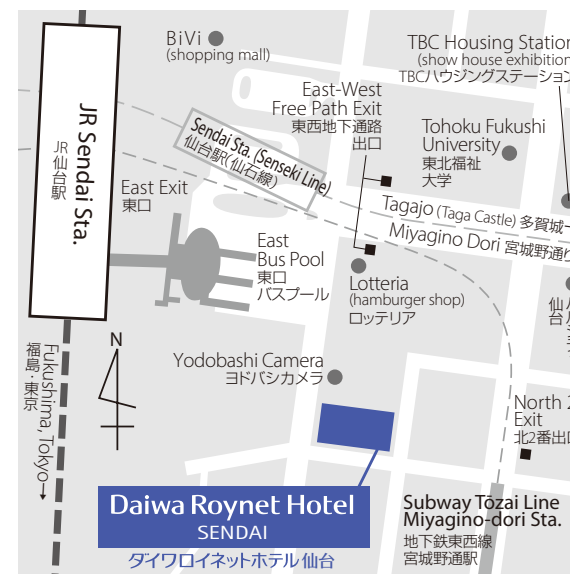
**Abajō Castle Ruins (Sendaijō Castle Ruins):** About a 15-minute drive from the hotel

**Matsushima:** About a 40-minute drive from the hotel

**Miyagi Baseball Stadium:** About a 23-minute walk or about 15 minutes by public transportation from the hotel

**Sendai Anpanman Children's Museum and Mall:** About a 10-minute walk from the hotel

**Sendai Tanabata Matsuri** (festival, 6th to 8th August): About a 10-minute walk to Chuo-Dori from the hotel



- 1) About a 2-minute walk from the East Gate of JR Sendai Station
- 2) About a 1-minute walk from the North 2 Exit of Miyagino-dori Station on the Subway Tozai Line
- 3) About 20 minutes from Sendai Airport to JR Sendai Station by Sendai Airport Access Line
- 4) About 15 minutes from Sendai Miyagi IC on the Tohoku Expressway

Hotel parking (Takeuchi Parking)

Fee: JPY1,200 per night per car (including tax) from 12:00 p.m. to 12:00 p.m. next day

Capacity: 28 standard-sized cars, 12 high-roof cars

Vehicle restrictions:

Standard-sized cars: maximum length -- 5,500mm; maximum height -- 1,550mm; maximum width -- 1,850mm; maximum weight -- 1,850kg

High-roof cars: maximum length -- 5,500mm; maximum height -- 2,050mm; maximum width -- 1,850mm; maximum weight -- 1,850kg

\* Available on arrival. We do not accept prior reservations.

\* We will direct you to nearby parking if the hotel parking lot is full, if the height or weight of your car is over the limitations, or if your particular type of car is unsuitable.

\* You cannot load or unload your car between 11:00 p.m. and 6:30 a.m. the following day.

## Daiwa Roynet Hotel SENDAI

1-2-37, Tsutsujigaoka, Miyagino-ku, Sendai-shi, Miyagi 983-0852

Phone 022-293-7055 Fax 022-293-7056

<https://www.daiwaroynet.jp/sendai>

Check in 14:00 / Check out 11:00