

Daiwa Roynet Hotel WAKAYAMA

A relaxed, functional hotel —
A place where you will feel completely
at home. An ideal base for business
or sightseeing in Wakayama.

Located in the center of the city, this 20-story high-rise
tower hotel provides a fabulous view of Wakayama Castle
with its abundant greenery as well as the city of Wakayama.

We offer spacious guest rooms and sophisticated
business support to make your stay as comfortable
and efficient as possible.

Daiwa Roynet Hotel WAKAYAMA would like to serve
as your base in Wakayama,
whether your trip is for sightseeing or business.



ダイワロイネットホテル和歌山





Standard Double Room (18.7m²)



Standard Twin Room (26.8m²)



Moderate Double Room (26.3m²)



Triple Room (35.7m²)



Deluxe Twin Room (71.1m²) We also have multipurpose meeting rooms.



We also have deluxe double rooms (35.9m²) and universal twin rooms (32.1m²).
(221 rooms in total)

Facilities and amenities

Free high-speed Internet (Wi-Fi) / VPN connectivity (all guest rooms have LAN cables)

Duvet / Liquid crystal display television set / Energy-saving system / Refrigerator (empty) / Air purifier with humidifier / Trouser press / Hair dryer / Bidet-style toilet seat / Charger for mobile devices / Electric kettle / Free satellite channels / VOD (Video on demand) / Hair shampoo / Hair conditioner / Body soap / Face and hand soap / Fabric deodorizer / Toothbrush and toothpaste / Razor / Hair brush / Cotton buds / Shoehorn / Shoe polisher / Hangers / Bath towel / Face towel / Body wash towel / Bath mat / Nightwear / Slippers

Amenities for kids (available at the front desk)

Facilities and services

Rental computer (JPY880 per night, including tax) / Copy and fax services (subject to fees) / Public computer (available in the lobby) / Parcel delivery service / Microwave / Vending machine / Laundromat / Ice / Auto adjustment machine / AED / Evacuation chair / Wheelchair

Restaurant Senqchere (Montigre 3F)

Our restaurant is called Senqchere. Senqchere is an amalgam of the French words *sentir* (feel), *cinq* (five) and *chère* (dear) meaning friendliness felt through the five senses.

At lunch time, we offer our *Buffet de Chef* or *Plate Lunch* (weekday only). The underlying concept is "Let our food make you healthy, happy and beautiful" to delight your mind and body. At dinner time, there are fixed and a la carte menus as well as a Japanese kaiseki course.

We have private dining rooms and banquet rooms to flexibly accommodate small groups or large parties.

Along with a wonderful view of Wakayama Castle, we hope you enjoy both our Japanese and Western cuisine prepared by our experienced chefs.



<Opening hours>

Breakfast: 7:00 a.m. to 10:00 a.m. (last order – 9:30 a.m.)

Lunch: 11:30 a.m. to 2:30 p.m. (last order – 2:00 p.m.)

Tea time: 2:30 p.m. to 5:00 p.m.

Dinner: 5:30 p.m. to 9:30 p.m. (last order – 9:00 p.m.)

* Dinner – Thursday to Sunday (please note our holidays are irregular.)

<Seating capacity>

Hall: 96,

Private dining room: 24

Phone:

073-435-0390

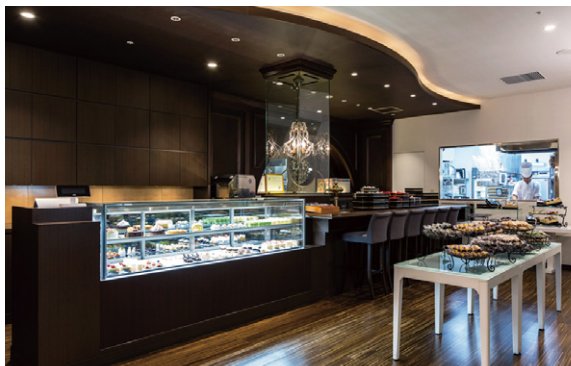


LA PATISSERIE CHOU CHOU (Montigre 3F)

We will welcome you with an abundant variety of cakes and baked goods from our hotel patissier. Our cakes are available in the shop as well as for takeout.

<Opening hours> 11:00 a.m. to 7:00 p.m.

Phone: 073-435-0394



*The photo is a sample image.

Aqua Chapel (Montigre 5F)



We offer wedding services that only a hotel with a solid track record and experience can provide. Let us create "a miracle moment" full of happiness for the wedding couple.

We also have a variety of plans for banquets, meetings and parties to suit your style and number of people.



Theater



Hollow square



School



Please feel free to contact us to discuss your plans.

Wedding Salon

Phone: 0120-887-390

(Weekday: 10:00 a.m. to 6:00 p.m. /

Saturday, Sunday and holiday:

10:00 a.m. to 7:00 p.m.)

Banquet / Meeting Inquiry

Phone: 073-435-3333

(10:00 a.m. to 6:00 p.m.)

Restaurants and stores

Convenience store : FamilyMart (1F) Open 24 hours

Restaurant : Senqchere (Montigre 3F)

Breakfast – 7:00 a.m. to 10:00 a.m.; Lunch – 11:30 a.m. to 2:30 p.m.; Tea time – 2:30 p.m. to 5:00 p.m.;
Dinner – 5:30 p.m. to 9:30 p.m. * Dinner – Thursday to Sunday (please note our holidays are irregular.)

Cake shop : LA PATISSERIE CHOU CHOU (Montigre 3F) 11:00 a.m. to 7:00 p.m.

Shopping complex : Montigre (1F to 3F)



Breakfast (3F: Senqchere)

At our hotel restaurant, guests can enjoy both a Japanese and Western buffet-style breakfast. We look forward to welcoming you with a rich and varied menu.

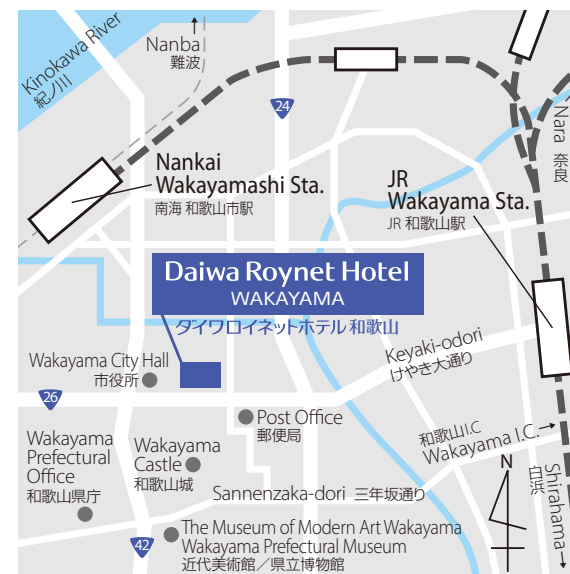
7:00 a.m. to 10:00 a.m.

Adults: JPY1,850 (including tax)

Children (from 6 years old to 11 years old): JPY1,000 (including tax) /

Infants (5 years old and younger): Free

Breakfast vouchers are sold at the front desk.



- 1) About a 10-minute bus ride from JR Wakayama Station
- 2) About a 5-minute bus ride from Nankai Dentetsu (Nankai Electric Railway) Wakayamashi Station
- 3) About a 15-minute drive from Hanwa Motorway Wakayama IC
- 4) From Kansai International Airport: about a 50-minute ride by Airport Limousine Bus to JR Wakayama Station

Associated Parking: Wakayama Royal Parking

Fee: JPY1,000 per night per car (including tax), loading and unloading are available 24 hours

Capacity: 513 cars

Vehicle restrictions: maximum height: 2,100mm

* Available on arrival. We do not accept prior reservations.

* Single-level parking is available if the height of your car is over the limit (JPY1,000 per night per car).

There is parking for motor coaches (JPY5,000 per night per vehicle)

You need to make prior reservations for cars over the limit or motor coaches.

* Please contact us for more information.

Local area guide (access from the hotel)

Wakayama Castle: About a 5-minute walk from the hotel

Wakayama Castle (Castle Tower): About a 25-minute walk from the hotel

Kimii-dera Temple: About a 35-minute drive from the hotel / about 45 minutes by public transportation

Marina City: About a 30-minute drive from the hotel / about 45 minutes by public transportation

Kōyasan (Mount Kōya): About a two-hour drive from the hotel / about 3 hours and 30 minutes by public transportation

Wakayama Adventure World: About a one-hour drive from the hotel / about 2 hours and 30 minutes by public transportation

Daiwa Roynet Hotel WAKAYAMA

26-1 Shichibancho, Wakayama-shi, Wakayama 640-8156

Phone 073-435-0055 Fax 073-435-0056

<https://www.daiwaroynet.jp/wakayama>