

Daiwa Roynet Hotel YAMAGATA-EKIMAE

We now have a new location
in Yamagata City, the prefectural capital,
ringed by its famous mountains.

It is located in the center of Yamagata City, about
a 3-minute walk from the East Exit of JR Yamagata Station.

We have a number of twin rooms and triple rooms,
and all guest rooms have separate bathroom and toilet.

Staying at the relaxing and comfortable
Daiwa Roynet Hotel YAMAGATA-EKIMAE will
provide you with an ideal base for business or sightseeing.



ダイワロイネットホテル 山形駅前



Moderate Double Room (21.7m²)



Junior Suite (53.4m²)



Deluxe Twin Room (34.1m²)



Fourth Room (49.3m²)

Facilities and amenities

Wireless LAN (Wi-Fi standard)

Duvet / Liquid crystal display television set / Energy-saving system / Refrigerator (empty) / Air purifier with humidifier / Safe / Trouser press / Hair dryer / Bidet-style toilet seat / Charger for mobile devices / Electric kettle / Free satellite channels / Hair shampoo / Hair rinse / Body soap / Face and hand soap / Fabric deodorizer / Shoehorn / Shoe polisher / Hangers / Bath towel / Face towel / Bath mat / Nightwear / Slippers

* Please pick up tooth brush sets, hair brushes, razors, cotton swabs, body towels and others at the amenity bar on the front desk floor.

Amenities for kids (available at the front desk)

All guest rooms except universal rooms have separate bathroom and toilet.
You can enjoy a relaxing bath even when multiple guests are using the room.



Separate toilet and bathroom (example)

We also have deluxe double rooms (24.8m²), deluxe king rooms (27.1m²), moderate twin rooms (27.2m²), and universal rooms (27.9m²).
(204 rooms in total)

Facilities and services

Copy and fax services (subject to fees)

Parcel delivery service / Microwave / Vending machine / Laundromat / Ice / Auto adjustment machine / AED / Wheelchair

Meeting room (3F: 89m²)

Our meeting room can be used for a variety of purposes. It has ample facilities and services such as basic furnishing, Internet connectivity, and rental fixtures. It is suitable for conferences, training, job interviews, or presentations.



Available 24 hours.

Price (including tax)

Full span	JPY20,000
Half span	JPY15,000

Capacity

	Classroom	Theater	Hollow Square
Full span	40 people	40 people	32 people
Half span	18 people	20 people	16 people

Rental fixtures (including tax)

Projector	Free	Internet connection	Free
Whiteboard	Free	Microphone (one unit) and stand	Free
Extension cord	Free	LAN cable	Free

* Contact us for detailed information about each fixture.

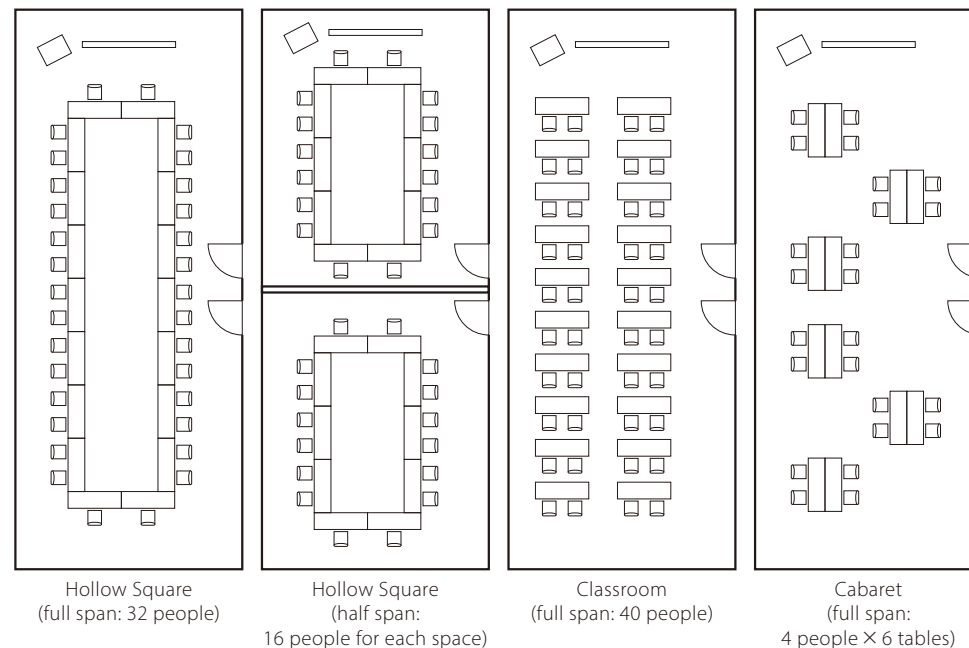
* Fully equipped with wired and wireless LAN

* Please contact us for more information on availability, catering, and so on.

Cancellation charge

Previous day	Same day	No use without notice
20%	80%	100%

Room layout example



Fitness room (3F)

We have a fitness room exclusively for guests.

Available 24 hours

Machines and equipment

Treadmill (Senoh): 1 unit

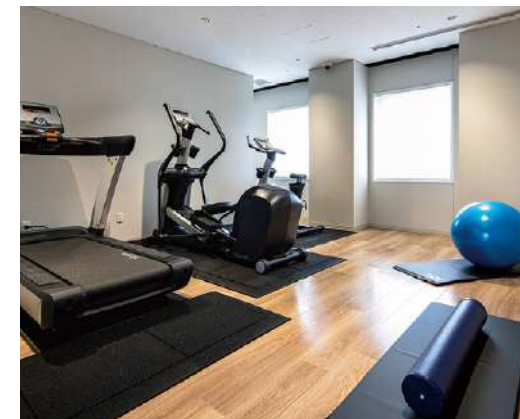
Cross-trainer (Senoh): 1 unit

Aerobike (exercise bike, Senoh): 1 unit

* Machines may be changed without notice.

Rental fixtures

Towels (limited number)



Restaurants and stores

Restaurant "Tokiwa" of Yonezawa Beef (1F):

Breakfast – 7:00 a.m. to 10:00 a.m. / Lunch and dinner – 11:00 a.m. to 10:00 p.m.

SevenEleven (1F): Open 24 hours



Breakfast (1F: "Tokiwa" of Yonezawa Beef)

Please enjoy our breakfast prepared by "Tokiwa," a long-established local restaurant in Yonezawa, including the local specialty "imoni," a stew with yam and meat, as well as Yonezawa beef dishes.

7:00 a.m. to 10:00 a.m. (please enter by 9:30 a.m.)

Adults (13 years and older): JPY1,980 (including tax) /

Children (from 6 years old to 12 years old): JPY990 (including tax)

Vouchers are sold at the front desk.

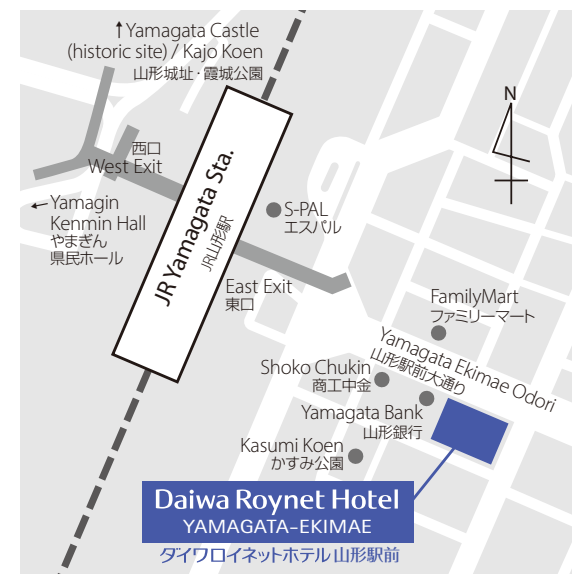
Local area guide (access from the hotel)

Yamagin Kenmin Hall: About an 8-minute walk

Yamagata Terrsa: About a 10-minute walk

Kajo Koen : About a 15-minute walk

Zao Onsen : About a 30-minute drive



- 1) About a 3-minute walk from the East Gate of JR Yamagata Station
- 2) About 40 minutes from Yamagata Airport to the East Gate of JR Yamagata Station by Shuttle Bus
- 3) About a 15-minute drive from Yamagata-Zao IC on the Tohoku-Odan Expressway via Prefectural Route 16
- 4) About a 13-minute drive from Yamagata-Chuo IC on the Tohoku-Chuo Expressway via Prefectural Route 18

Multistorey car park in the hotel premises

Fee: JPY1,200 per night per car (2:00 p.m. to 11:00 a.m. the following day, including tax)

Operating hours: 7:00 a.m. to 11:00 p.m.

Capacity: 32 cars

Vehicle restriction: Maximum height: 2,000 mm / maximum width: 1,900 mm / maximum length: 5,000 mm / maximum weight: 2.00 t

* Available on arrival. We do not accept prior reservations.

* We will direct you to nearby parking if the parking lot is full, if the height or weight of your car is over limitations, or if your particular type of car is unsuitable.

* Please pay at the parking lot where you parked your car.

Daiwa Roynet Hotel YAMAGATA-EKIMAE

2-9 Saiwai-cho, Yamagata-shi, Yamagata 990-0038

Phone 023-627-7255 Fax 023-627-7256

<https://www.daiwaroynet.jp/yamagata-ekimae/>

Check in 14:00 / Check out 11:00