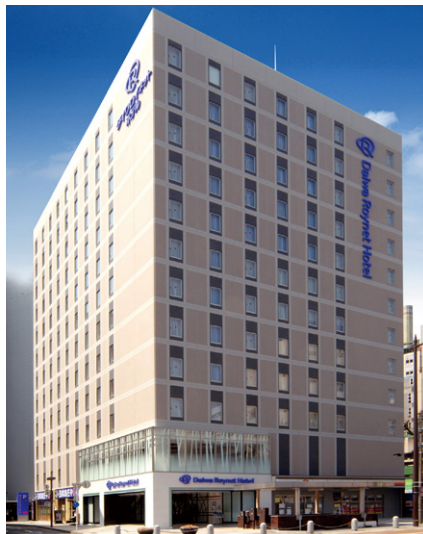
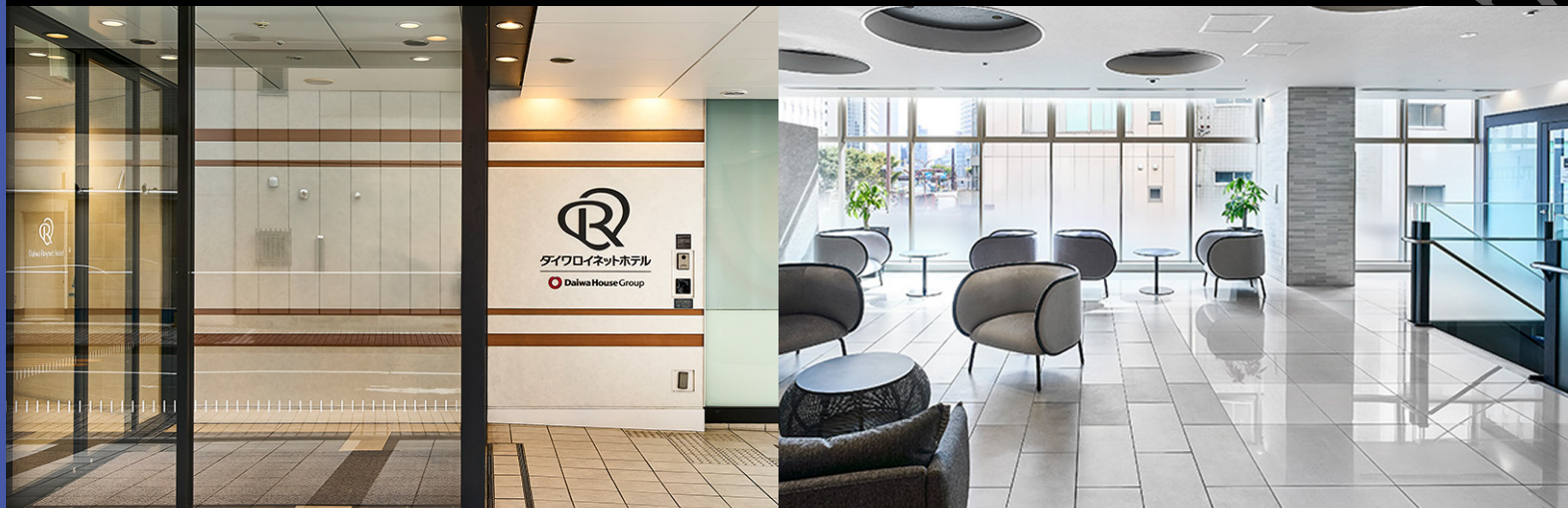


Daiwa Roynet Hotel HAMAMATSU

A moment of pure relaxation and
quality time.

A hotel that enriches your stay in
Hamamatsu.

Previously a castle town and a post town,
now a city of music and manufacture,
Hamamatsu is a thriving creative center.
In addition, it lies in an area of abundant natural beauty,
with many picturesque spots including Lake Hamana,
Bentenjima island, and Kanzanji Onsen.
Daiwa Roynet Hotel HAMAMATSU would like to serve as
your base in Hamamatsu,
whether your trip is for sightseeing or business.



ダイワロイネットホテル 浜松

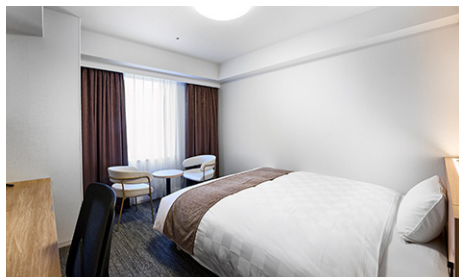




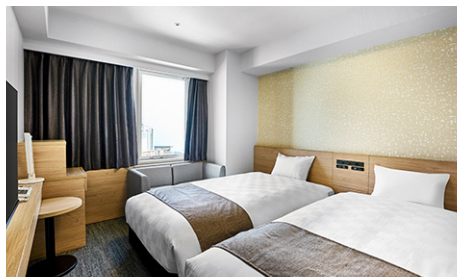
Standard Double Room (18m²)



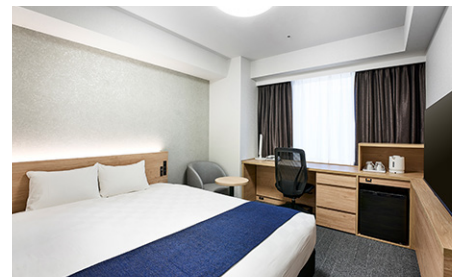
Twin Room (27m²)



Executive Double Room (21m²)



Casual Twin Room (20m²)



Deluxe Double Room (20m²)



Universal Room (27m²)

Other rooms include Standard Triples (27m²)

(210 rooms in total)

Facilities and amenities

Wireless LAN / VPN connectivity

Duvet / Television / Indoor illuminance 240Lux / Energy-saving system / Refrigerator(Drinks not included) / Wide Desk & Desk Chair / Trouser Press / Electronic toilets with seat heating / Hair dryer / Charger for mobile phone or smartphone / Air purifiers(with humidification function) / Electric pot / Free BS channel / VOD (Video on demand) / Shampoo / Conditioner / Body wash / Facial wash and Hand wash / Deodorizer spray / Shoehorn / Brush / Shoe shine paper / Clothes hanger / Bath towel / Hand towel / Bath mat / Slippers / Nightwear

*Toothbrush sets, Razors, Hairbrush, Cotton swabs, Body towel, and other amenities are available at the amenity bar on the front desk floor.

Bath amenities for Kids(Given at the front desk)

Facilities and services

Copy and fax services (subject to fees) / Parcel delivery service / Microwave / Vending machine / Laundromat / Ice / Automated Payment Machine / AED / Evacuation chair / Wheelchair

Restaurants and stores

FamilyMart (1F) Open 24 hours

Nihonkai Shoya (1F) 6:30 a.m. to 10:00 a.m. / 11:30 a.m. to 2:00 p.m. / 5:00 p.m. to 11:00 p.m.



Breakfast (1F: Nihonkai Shoya)

We offer buffet-style Japanese and Western dishes.



6:30 a.m. to 10:00 a.m. (Last entry at 9:30 a.m.)

Adults (13 years and older): JPY1,200 (including tax) /

Children (from 6 years old to 12 years old): JPY800 (including tax) /

Infants (5 years old and younger): Free

Breakfast vouchers are sold at the front desk.

Local area guide (access from the hotel)

Hamamatsujo Castle / Hamamatsujo Park: About a 20-minute walk from the hotel

Lake Hamana: About a 45-minute drive from the hotel



- 1) About a 3-minute walk from the north exit of JR Hamamatsu Station
- 2) About a 2-minute walk from Shinhamamatsu Station of Enshu Railway
- 3) About a 25-minute drive from Hamamatsu IC of the Tomei Expressway
- 4) About a 30-minute drive from Hamamatsu West IC of the Tomei Expressway
- 5) About a 40-minute drive from Hamamatsu-Hamakita IC of the Shin-Tomei Expressway

Hotel parking (multi-storey car parking)

Fee: Maximum JPY1,000 per night per car (2:00 p.m. to 11:00 a.m. the following day, including tax)

Operation hours: 7:00 a.m. to 11:00 p.m.

Capacity: 32 cars

Vehicle restrictions: maximum height: 2,050mm

* First come, first served. We do not accept prior reservations.

* We will direct you to other nearby parking areas if the parking lot is full, if the height or weight of your car is over limitations or if your particular type of car is unsuitable. Please inquire at the parking. Our staff will take care of you.

Daiwa Roynet Hotel HAMAMATSU

9-1, Asahicho, Naka-ku, Hamamatsu-shi, Shizuoka 430-0927

Phone 053-455-8855 Fax 053-455-8856

<https://www.daiwaroynet.jp/hamamatsu/>

Check in 14:00 / Check out 11:00