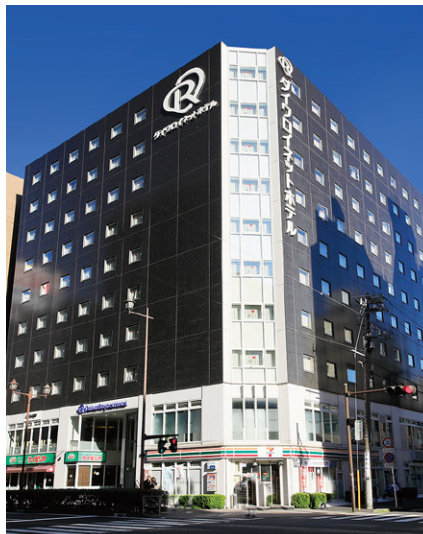


# Daiwa Roynet Hotel YOKOHAMA-KANNAI

A relaxed, functional hotel —  
A place where you will feel completely  
at home. An ideal base for business  
or sightseeing in Yokohama.

Kannai, a modern day gateway to Japan, derives its name from the treaty port set up in Yokohama following the Treaty of Amity and Commerce between the United States and Japan in the mid-19th century. Kannai encompasses tourist sites including Motomachi shopping district, China Town and Yamashita Park as well as public offices. Revitalization of the area began with the opening of the subway Minatomirai Line. Daiwa Roynet Hotel YOKOHAMA-KANNAI would like to serve as your base in Yokohama, whether your trip is for sightseeing or business.



ダイワロイネットホテル 横浜関内



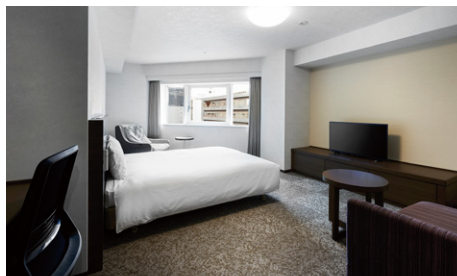
**Standard Room** (18m<sup>2</sup>)



**Standard Twin Room** (29m<sup>2</sup>)



**Moderate Double Room** (19m<sup>2</sup>)



**Deluxe Double Room** (36m<sup>2</sup>)



**Hollywood Twin Room** (36m<sup>2</sup>)

We also have Universal rooms (29m<sup>2</sup>).

(212 rooms in total)

### Facilities and amenities

Free high-speed Internet (Wi-Fi) / VPN connectivity (all guest rooms have LAN cables)

Duvet / Liquid crystal display television set / Energy-saving system / Refrigerator (empty) / Air purifier with humidifier / Trouser press / Hair dryer / Bidet-style toilet seat / Charger for mobile devices / Electric kettle / Free satellite channels / VOD (Video on demand) / Hair shampoo / Hair rinse / Body soap / Face and hand soap / Fabric deodorizer / Toothbrush and toothpaste / Razor / Hair brush / Cotton buds / Shoehorn / Shoe brush / Shoe polishing sheet / Hangers / Bath towel / Face towel / Body wash towel / Bath mat / Nightwear / Slippers

Amenities for kids (available at the front desk)

### Facilities and services

Rental computer (JPY880 per night, including tax) / Copy and fax services (subject to fees) / Public computer (available in the lobby) / Parcel delivery service (chilled and frozen items not included) / Microwave / Vending machine / Laundromat / Ice / Auto adjustment machine / AED / Evacuation chair / Wheelchair

## Restaurants and stores

Photo studio "STUDIO PASELA" (B1) Advance booking only. Closed on Tuesdays.

Seven-Eleven (1F) Open 24 hours

Restaurant "Saizeriya" (1F) 10:00 a.m. to 10:00 p.m.

Dispensary "Kannai Central Pharmacy" (1F)  
weekday – 9:00 a.m. to 7:00 p.m. / Wednesday – 9:00 a.m. to 1:30 p.m. / Saturday – 9:00 a.m. to 5:30 p.m. / close on Sundays and National Holidays

Barber "CUTSHOP C3" (1F)

9:30 a.m. to 7:30 p.m. / close on Thursdays and Mondays on the 1st week, the 3rd week and the 5th week

Beauty shop "LAUNA" (2F) 10:00 a.m. to 8:00 p.m.

Thyroid and Parathyroid specialist "Yokohama-Kannai Wada Clinic" (2F) Appointment only.



Daisuki plate

## Breakfast (2F: Komeda's Coffee)

Spend a relaxed morning at the popular Komeda's Coffee!  
Komeda's Coffee offers several different original breakfast sets.

6:30 a.m. to 11:00 a.m.

Advance voucher for adults (13 years and older): JPY950 (including tax)

Same-day voucher for adults (13 years and older):

JPY1,200 (including tax) / Children (from 6 years old to 12 years old,  
Daisuki plate): JPY590 (including tax)

Breakfast vouchers are available at the front desk.

Please ask for "Daisuki plate" at Komeda's Coffee.

## Local area guide (access from the hotel)

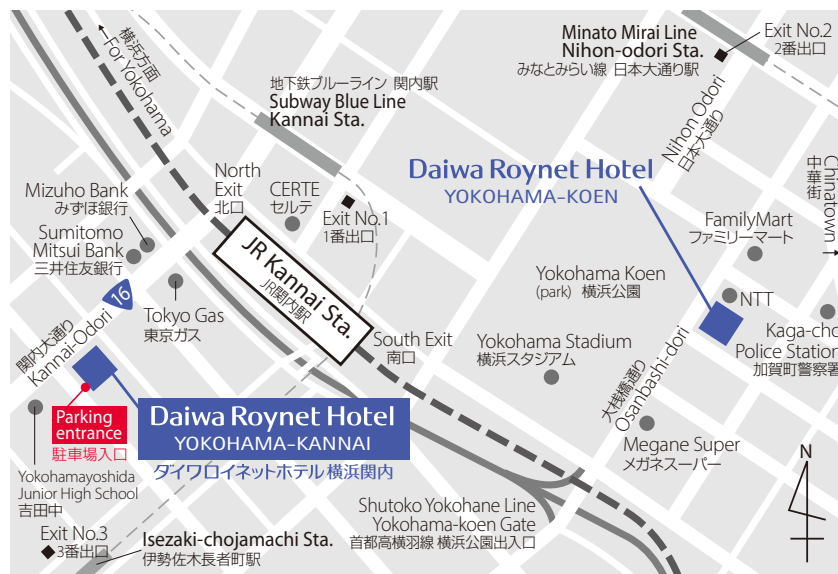
**Chinatown, Yokohama:** About a 15-minute walk from the hotel

**PACIFICO Yokohama (Minatomirai 21):** About a 12-minute drive from the hotel / about 20 minutes by public transportation

**Yokohama Red Brick Warehouse:** About a 20-minute walk from the hotel

**Nogeyama Zoo:** About a 20-minute walk / about a 10-minute drive from the hotel

**Yokohama Hakkeijima Sea Paradise:** About 35 minutes by public transportation



- 1) About a 3-minute walk from the North Exit of JR Kannai Station
- 2) About a 3-minute walk from the No.3 Exit of Isezaki-chojiamachi Station on the Yokohama Municipal Subway
- 3) About 20 minutes from Shin-Yokohama Station on the JR Tokaido Shinkansen
- 4) About 40 minutes from Haneda Airport by Keikyu Line

Affiliated parking (D-parking Yokohama-Kannai PS Dai1)

Fee: JPY1,500 per night per car (from 2:00 p.m. to 2:00 p.m. the following day, including tax)

Operating hours: 7:00 a.m. to 10:00 p.m. (You cannot bring vehicles in or out outside of these hours.)

Capacity: 36 cars

Vehicle restrictions: Maximum height – 1,550 mm / maximum width – 1,850 mm / maximum length – 5,050 mm / maximum weight – 1.85 t

\* Available on arrival. We do not accept prior reservations.

\* We will direct you to nearby parking if the parking lot is full, if the height or weight of your car is over limitations, or if your particular type of car is unsuitable.

## Daiwa Roynet Hotel YOKOHAMA-KANNAI

2-7-4 Hagaromo-cho, Naka-ku, Yokohama-shi, Kanagawa 231-0047

Phone 045-252-1475 Fax 045-252-1476

<https://www.daiwaroynet.jp/yokohama-kannai>

Check in 14:00 / Check out 11:00